



www.**water-garden**.co.uk



Passionate for Ponds. *Dedicated to Quality.*

OUR MISSION

To provide **expert advice and technical support** regarding ponds, lakes and water features and to supply the very **best equipment available today** in a rapid manner to **our customers throughout the UK.**

- ✓ We provide specialist technical advice available by telephone, email, live chat or by visiting us. **We have over 70 years combined in-house experience in pumping, filtration, design, engineering and waterscaping.**
- ✓ We provide **detailed, itemised quotations** available with individual links to our expansive website at **www.water-garden.co.uk**
- ✓ Highly **competitive pricing** and **trade discounting** available.
- ✓ Huge stocks of equipment from market-leading global suppliers and we carry a **5 Star OASE Retailer** status for added peace of mind.
- ✓ Rapid **UK-wide courier despatch** of goods direct to site, home or office, usually available on a **next working day service.**
- ✓ We'll package together all components required to simplify installation and ensure **complete client satisfaction.**
- ✓ We look to supply you with localised project enquiries received via our online **Landscaper Finder Tool** to your company.
- ✓ Provide access to future **OASE, Firestone and Otterbine training** and seminars.

Water Garden Ltd have been specifying and supplying high quality waterscaping equipment to private customers, garden designers, landscapers and architects **throughout the UK for over 19 years.**

Our proven technical experience and deep product knowledge sets us far apart from the competition.

We can also produce Bespoke and Customised installation pieces such as Water Rills, Water Blade Cascades, Capillary Water Walls, Fountain Spray Bars and decorative sculptures from materials such as Stone, Glass, Copper and Stainless Steel.


Technical
HelpLine


Online
CHAT

Trade
DISCOUNT 

Passionate for Ponds. Dedicated to Quality.

 **www.
water-garden
.co.uk**

CONTENTS

- 4 POND EQUIPMENT
- 5 SWIMMING PONDS
- 6 FOUNTAINS & FEATURES
- 7 WATER BLADES & CASCADES
- 8 SWIMMING POOLS
- 9 POND CARE & MAINTENANCE
- 10 LIGHTING SYSTEMS
- 11 POWER MANAGEMENT
- 12 CASE STUDY
- 14 LAKE MANAGEMENT
- 15 FLOATING FOUNTAINS
- 16 AERATION
- 18 POND & LAKE CONSTRUCTION
- 19 DRAINAGE & IRRIGATION
- 20 BSP THREADED FITTINGS
- 21 SPARES & CONSUMABLES
- 22 SERVICES WE OFFER





POND Equipment



1

FILTRATION

Filters & Ultraviolet-Clarifiers for all pond sizes and fish stock densities.



2

WATERFALLS

Cascading water blades and decorative stone liners for attractive displays.



3

FILTER PUMPS

Solids-handling & energy efficient. For supplying pond filters & waterfalls.



4

FOUNTAINS

A massive range of decorative fountains for stunning water displays.



5

LIGHTING

Fully submersible range of LED lighting for all pond and landscape applications.



6

SMART CONTROLS

Switchboxes and remote control systems for smart device control.



“ The guys at Water Garden have such an in-depth knowledge of their products. As a Landscape Gardening firm, we find their help invaluable when at the planning and costing stage. ”



SWIMMING Ponds

GET PERSONAL WITH NATURE

Natural swimming ponds are becoming an increasingly popular trend for those who want to enjoy the benefits of a swimming pool, but who also want to create a stunning natural feature when not in use.

Swimming ponds use no chemicals whatsoever; instead these rely on 'vegetable filtration' (planting) and in many cases, mechanical filtering of particles and a UV Clarifier to tackle algae.

ECO-FRIENDLY BEAUTY

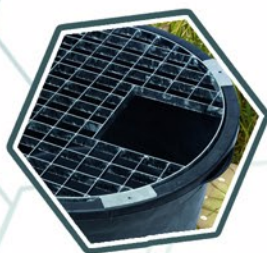
Water Garden Ltd offer energy-efficient technology to help sustain a fresh water pool without the need for aggressive chemicals. Natural swim ponds are a wildlife magnet and will act as a haven for a variety of species such as dragonflies, damselflies, bees, newts, birds, hedgehogs, water fowl and native mammals.

What's not to love about that!





FOUNTAINS & Features



RESERVOIRS

Catchment tanks with steel grids for pondless water features.



FOUNTAINS

Easy to assemble pondless water displays without open water safety concerns.



BLADE CASCADES

Popular and stunning cascading water sheets for pond or garden installation.



WATER FEATURES

Garden features made of stone, copper and stainless steel.



DANCING WATER

Pulsing, dynamic fountains and lighting options with smart controls.

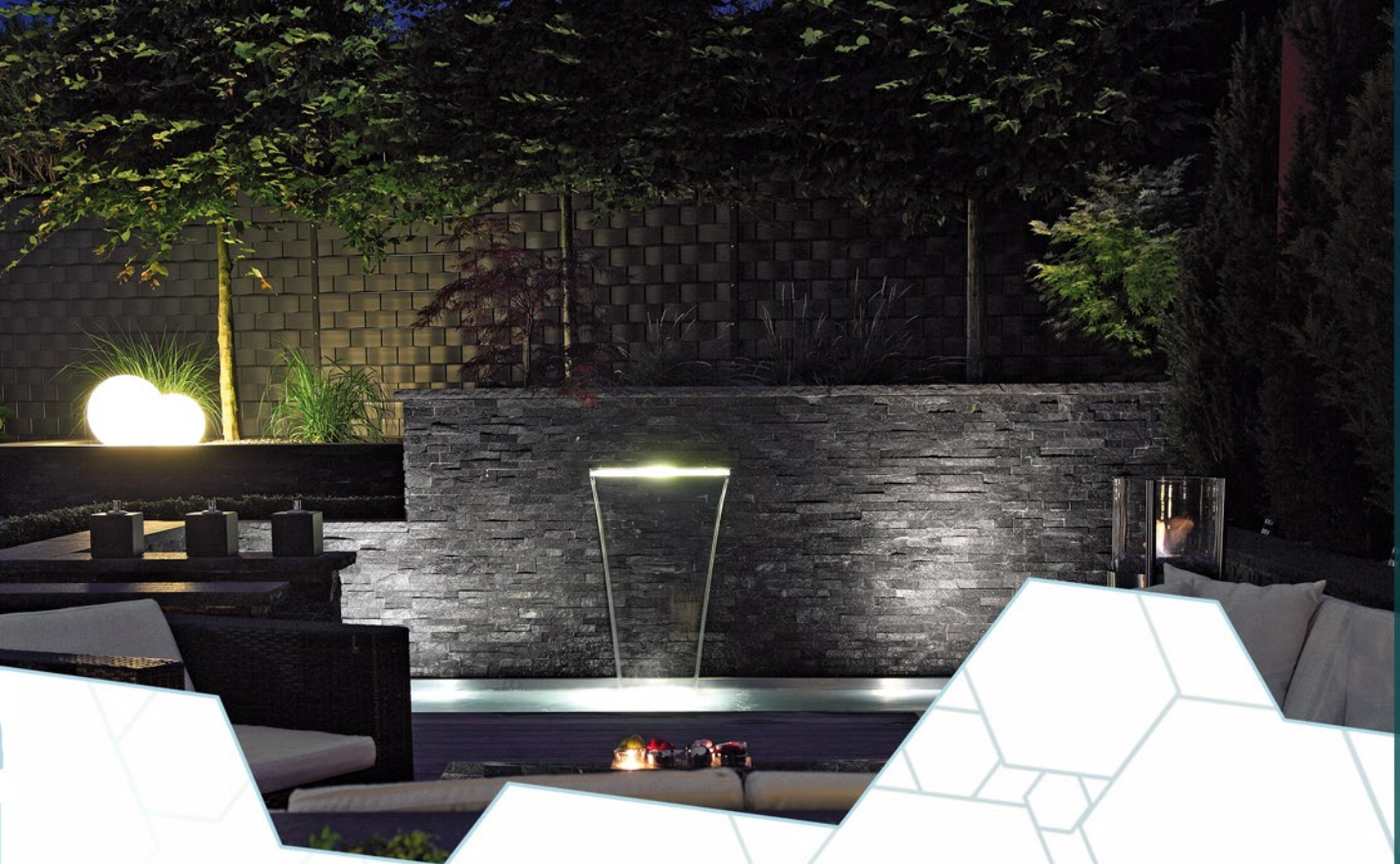


BESPOKE

One-off pieces constructed to your design in virtually any material.



“ We have used Water Garden's excellent products on many of our installations, from fountain rings, jet nozzles, pumps and filters. Great service, technical back-up and value for money. ”



WATER BLADES & Cascades

CONTEMPORARY WATER

A water blade is the name given for a clean, tranquilised sheet of falling water, usually emitting from a narrow slot or shallow trough inside of a wall or façade. Water Blades are a very popular choice in modern gardens.

Stainless steel water blades will tranquilise the pumped water flow, spreading the water over the full width of the blade before cascading down to the pool or hidden reservoir below.

STUNNING ILLUMINATION

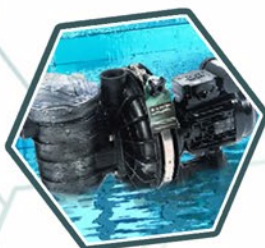
Water Garden offer a range of LED lighting which fit snugly inside of our water blades. The geometry is set so that the light will bend down with the water sheet, similar to a fibre optic. This stunning effect looks wonderful during the evening time.

Whether the blade is used inside a pond, pool, or as a garden water feature, we can specify and supply all of the required equipment for your project.



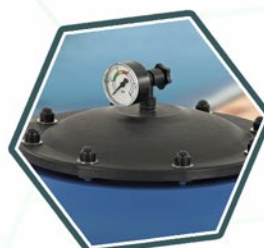


SWIMMING Pools



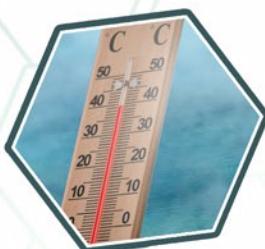
POOL PUMPS

Chlorine resistant, high performance pumps for use in pool setups.



FILTRATION

Sand filters and pressure filtration units for use with treated water.



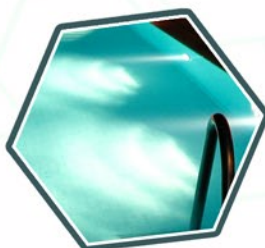
HEATING

Swimming pool water heaters and dehumidifiers.



TREATMENTS

Chlorine tablets, testing kits and chemical dosing.



LIGHTING

Submersible lighting to fit flush with pool walls.



ACCESSORIES

Swimming pool pipework, fittings and consumables.



“ The items were delivered really quickly (and by a wonderfully helpful delivery driver) and, within 5 days of installing the system in Italy, we saw really dramatic changes in the water quality and appearance of our pool. ”



POND CARE & Maintenance



SKIMMERS

Surface skimmers for a wide range of pond sizes. Height adjustable and floating units.



POND VACUUMS

A range of pond vacuum cleaners with a variety of nozzles and attachments.



WATER QUALITY

Testing kits, biological and preventative treatments for water clarity & fish health.



POND DYE

Wildlife friendly, algae inhibiting dyes for use in ponds, lakes and reflection pools.



FISH FOOD

High quality fish and Koi foods for all seasons and automated fish feeders.



AERATORS

Pond oxygenators for small or large ponds to help stem algae growth, improve fish health and aid water circulation.



“ ...The water is crystal clear and weed is almost non existent. I am not one to leave comments whether good or bad but on this occasion I felt I just had to. ”



LIGHTING

Systems



SUBMERSIBLE

Fully submersible lights, connectors and transformers.



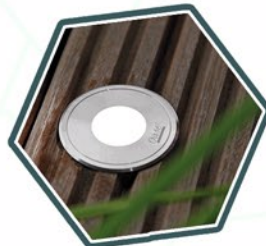
PLUG & PLAY

Low voltage, adaptable and simple to install in both pond and garden.



RGB LIGHTING

Remote controlled, submersible colour changing LED lighting.



DECK LIGHTING

IP68 rated deck lights for patio and pond installation.



COMMERCIAL

Highly durable, powerful lighting for larger projects.



FIRE PITS

Wide range of Corten steel bowls, barbecues, fireplaces and pits.



“ Water Garden have a great range of low voltage garden and aqua lighting which we have used several times. In short they provide a first class service that is hard to find and are genuinely nice people who have a passion in what they do. ”



POWER Management



REMOTE CONTROL

Control pond and garden equipment via a remote handset.



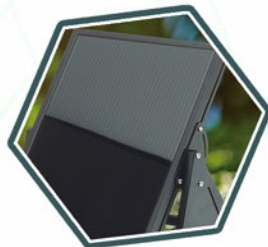
SMART CONTROL

Control the entire garden via Smartphone or Tablet.



CABLE JOINTS

IP67 & IP68 cable joints and electrical junction boxes.



SOLAR PRODUCTS

Photovoltaic Panels, controllers and batteries for self-sufficient operation.



ECO PUMPS

Smart pumps to facilitate electronic control of water flow.



SWITCH BOXES

Fully weatherproof switches and electrical distribution boxes.



“

Water-Garden definitely go the extra mile to provide exceptional customer service, which is why I return to them time and time again - I've been a customer for close on ten years.

”



CASE

The whole Water Garden

Step 1



GETTING IN TOUCH

The owners (Steve & Alice) had their hearts set on creating a natural swimming pond as part of a complete landscape overhaul.

The main goal was to create an attractive wildlife pond with the ability to swim within it, should they wish. A floating deck and summerhouse were also part of the dream. Steve called Water Garden to discuss the concept with Andy.

GETTING IT RIGHT

After a number of discussions and basic but useful sketches from Alice, Andy performed the calculations for water volume, pond lining and filtration.

Steve & Alice were keen to obtain budget costs for the equipment and also have the pond built by a professional.

Andy recommended a local waterscaper (Nick) who installs Water Garden equipment on a regular basis for many years and has a very successful track record of previous pond projects.

Step 2



Step 3



WORK BEGINS

After a site visit from Nick, both the equipment and installation quotes were approved and within the month, works had commenced.

Once the pond area had been excavated, the filtration pipework and protective underlay were laid and the rubber liner installed.

The floating jetty required concreting into place and had been designed with the aim to almost touch the water surface, creating the illusion of a floating platform. A large rock waterfall was also created to add water movement to the far end of the pond.

STUDY

process, beginning to end

Step 4



TAKING SHAPE

The summerhouse had been selected by the installer and owners to offer a tranquil place to relax but to also house the filtration equipment.

The automated filter was up-scaled to offer virtually gin-clear water clarity, ideal for swimming.

A shallow zone had been created for planting which soon started taking shape, creating an informal yet stunning vista.

PROJECT COMPLETION

Once the filtration had been commissioned, Nick returned to site 2 weeks later for final inspection and signing off.

Steve and Alice were delighted with the end result and had already hosted two 'pool' parties in between commissioning and Nick's return visit!

Supplemental lighting was installed shortly after to further enhance the pond perimeter and planting zone during the evening time.

Step 6



Step 5



AND BEYOND...

Steve asked Nick for an annual maintenance visit to service the filter, vacuum clean the pool and maintain the planting. The self-cleaning filter required the UV bulbs to be changed annually which Andy held in stock for Nick to fit during the annual service.

The project was a huge success, utilising high quality products, correctly specified and installed by experts. Should any equipment malfunction, we are here for advice and support, backed by long product guarantees.





LAKE Management



LAKE SKIMMERS

Floating surface skimmers proficient in coping with large surface areas.



DISPLAYS

Impressive floating fountains from small displays to grand jets shooting over 50ft high.



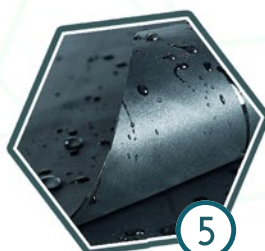
SURFACE AERATORS

Floating surface aeration units in a variety of display styles and sizes.



LIGHTING

High output, submersible lighting, stand alone or for connection to floating units.



LAKE LINERS

Durable, guaranteed materials and liner seaming supplies.



DIFFUSED AERATION

Submersed solutions for deep water and discrete aeration projects.



“ Their attention to detail, knowledge, courteousness and help is second to none. They treat the customer as king and as if you are the only person that they are dealing with. It is totally personal and individual advice for YOUR setup. ”



FLOATING Fountains



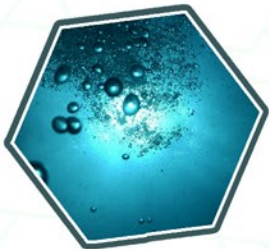
DECORATIVE

Simple to install, smaller scale floating fountains for ponds.



ENERGY EFFICIENT

Low energy, high volume floating aerators with decorative effects.



SALT WATER

Range of fountains and aerators for brackish and salt-water applications.



IMPRESSIVE

Substantial fountain displays for commercial and residential ponds and lakes.



HIGH VOLUME

Low profile floating aerators for lake oxygenation and circulation.



ILLUMINATION

Powerful Halogen, Low energy LED and colour phasing lighting options.



“ It's not just the sale of a product, but the whole thought process from calculations right through to installation methods. ”



AERATION

The Power of Oxygen

ALGAE?

You know, that water-greening, wall-covering, unsightly sludge-making plant. The green hair you see in ponds or that thick string mat floating atop the water. No pond owner wants it and no amount of cleaning will ever stop it coming back.



LIFE ALWAYS FINDS A WAY

Or so they say....

A little bit of oxygen and sunlight and life appears.

Algae has been around for more than a billion years. It's *everywhere*.

Leave a glass of tap water in the sun, and you can bet in a few days you will have algae. Algae, like most plants, needs oxygen to live, grow and multiply. So, oxygenating water can seem like an unusual method for reducing green water.

To explain why aeration is so effective, let's talk about one of algae's ancestors; bacteria.

Bacteria also consumes oxygen, they also multiply just like algae. However this type of bacteria has the key advantage of being invisible to the naked eye, unlike problematic green algae. It's also got a few extra billion years on its evolution to refine its efficiency.

Q.E.D give water oxygen and bacteria will outcompete and starve out the algae. The dead algae will then feed other strains of bacteria. This army of 'friendly' bacteria will continue to thrive in the presence of oxygen.

AERATORS

An Aerator is a machine dedicated to introducing oxygen to water. These come in two main guises; *diffused* aerators and *surface* aerators. There are also other methods of introducing oxygen to a waterbody, but we will concentrate on the main two types as these are used in the majority of situations.

When matched to the water volume, the result is the same. Both help to circulate, oxygenate and keep green water to a minimum. The key difference lies in its appearance.





SURFACE AERATORS

Surface aerators discharge water into the air, which then lands back into the waterbody, creating a circulation of oxygenated water.

Surface aerators have an additional benefit over diffused aeration by creating lots of surface disturbance. This is perfect for deterring mosquitos from laying their eggs in the water and inhibits the growth of surface weeds such as duckweed.

Perhaps the most notable advantage of a surface aerator is that they look great! Just because it's *doing* a boring job, doesn't mean it has to *look* boring too. Surface aerators come in a huge array of decorative effects.

DIFFUSED AERATORS

Diffused aerators use shore-mounted air compressors, weighted air hoses and submersed porous pads that dissipate the air into a fine spread of bubbles under the water. As these bubbles rise, oxygen is 'diffused' throughout the water, hence the name.

They're generally considered more efficient than surface aerators but require a greater operating depth in order to allow the air to diffuse effectively. The porous pads usually require at least 8ft of water depth to diffuse effectively, whereas surface aerators can operate effectively in significantly shallower water.

Perhaps the most notable feature is the fact they have little-to-no audible or visual presence, so are ideal for situations where tranquillity is preferred. Without the need for tethering cables or mains electricity in the water, diffused aeration is well suited to fishing and boating lakes.

WHAT DO I NEED?

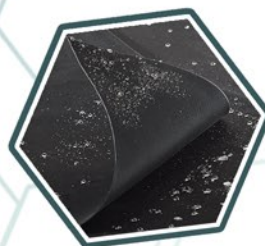
There's plenty to talk about for either type of aeration. Sometimes it can be unclear which option is most suitable. Our technical team are trained to ask the right questions and ensure the best type of aeration is recommended and specified to suit your pond or lake.

If you're ever unsure, we're here to give expert advice.



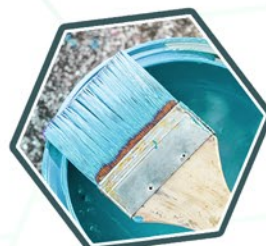


POND & LAKE Construction



RUBBER LINERS

High quality PVC and EPDM Rubber liners for virtually any pond or lake sealing task.



POND PAINTS

Two part epoxy paints for concrete pond sealing and available in virtually any colour.



UNDERLAY

Heavy duty, non-woven protective underlay to safeguard the pond lining.



POND EDGING

Solid, torsion-resistant pond barrier, for easy installation and elegant results.



STONE LINERS

Flexible, stone impregnated liners for decorating pond perimeters and streams.



ADHESIVES

Underwater sealants, expanding foam, liner jointing materials and cleaning solvents.



“ I can happily recommend Water Garden Ltd. The sales team couldn't have been more helpful and they supply quality products, professionally made. Fast delivery and impressive customer service. I couldn't have asked for more. ”



DRAINAGE & Irrigation



SOLIDS HANDLING

Workhorse pumps to make light work of the dirtiest jobs.



WELL PUMPS

High pressure borehole pumps for evacuating water from significant depths.



PUDDLE SUCKERS

Pumps capable of removing nuisance water down to 1mm depth.



FLOAT SWITCHED

Emergency evacuation of water with automatic switching.



IRRIGATION HOSE

Flexible smooth bore pipe and lay flat hoses for rapid water transportation.



IRRIGATION PUMPS

Self-priming and high pressure pumps for connection to garden hose and other irrigation equipment.



“ I would like to convey sincere thanks to your staff in the help and efficiency that has been given. If all companies had staff and support like yourselves, this country's trading position would be unbeatable. ”



FITTINGS

BSP Threaded



HEAVY DUTY HOSE

Flexible pond hose that is built to last. Medium duty and heavy duty hose up to 30m.



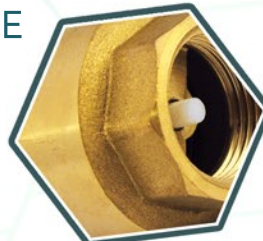
HOSE JOINING

A range of hose tails, joiners and clips to ensure a smooth and straightforward connection.



STRAINERS

Tin can, fine mesh and satellite strainers for use in a wide range of applications.



VALVES

High grade brass check valves, ball valves and valved Y-pieces.



BSP THREADED

A massive range of sockets, nipples, bushes and risers in 1/2" to 3". Everything you need to get from A to B.



STAINLESS STEEL

High quality 316 Stainless Steel range of fittings; for highly durable and rust proof installation.



“ I sent in photos of the project by email and the best fittings to achieve what was required were recommended. After purchasing and installing these, the results where fantastic and achieved the required effect. ”



SPARES & Consumables



UV BULBS

Ultraviolet Lamps for OASE UV Clarifiers to ensure crystal clear water.



UV SPARES

Ballast units, self-cleaning rotors and replacement quartz glass sleeves.



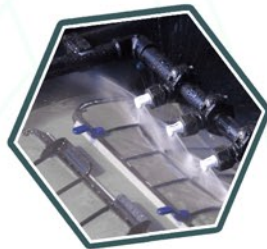
POND VACUUMS

Spare parts for the full range of PondoVac Pond Vacuum Cleaners.



FILTER FOAMS

Genuine OASE filter sponges for all of their pond filter systems.



FILTER DRUMS

Full stock of ProfiClear Drum Sieves for all OASE automated drum filters.



COMPLETE ACCESS

If it's not in our stock, we can obtain the spare part within 7 days for you.



“Extremely helpful staff - no problems in phoning to sort out a problem. They are great at finding the right parts or equipment. I have used this company many times in recent years and will continue using their top rate service.”

Passionate for Ponds. Dedicated to Quality.



SERVICES

We Offer



LANDSCAPER MAP

Need an expert installer?
We have a map of trusted landscaping experts across the UK.



EXPERT ADVICE

We understand water and ensure that what we recommend is up to the task.



QUOTATIONS

Itemised and comprehensive quotations, provided on request for your project.



AFTERSALES

We look after our customers. If you have a problem with a product or need advice, give us a call.



TRADE DISCOUNT

We offer trade discounts and incentives to all our repeat trade customers.



BESPOKE

Need something custom built? Let us know and we will do our best to get you a quote as soon as possible.



“ I am a professional landscaper and these guys really know their stuff. Quick delivery and very helpful. ”



[www.
water-garden
.co.uk](http://www.water-garden.co.uk)



www.
water-garden
.co.uk

WATER GARDEN LTD

Unit 7 Warrior Business Centre
Fitzherbert Road
Farlington

PORTSMOUTH
Hampshire PO6 1TX

contact@water-garden.co.uk

02392 373735

Passionate for Ponds. *Dedicated to Quality.*