

*NanoFiber Filter*  
*Filtre NanoFiber*  
*Filtro NanoFiber*  
*Filtro NanoFiber*  
*NanoFiber-Filter*  
*Filtro NanoFiber*

64837

64838

64839



*INSTALLATION AND MAINTENANCE MANUAL*  
*MANUEL D'INSTALLATION ET D'ENTRETIEN*  
*MANUAL DE INSTALACIÓN Y MANTENIMIENTO*  
*MANUALE DI INSTALAZIONE E MANUTENZIONE*  
*EINBAU-UND BETRIEBSANLEITUNG*  
*MANUAL DE INSTRUÇÕES E MANUTENÇÃO*

**ASTRALPOOL** 

## ENGLISH

**IMPORTANT:** The instruction manual you are holding includes essential information on the safety measures to be implemented for installation and start-up. Therefore, the installer as well as the user must read the instructions before beginning installation and start-up. Keep this manual for future reference.

To achieve optimum performance of the Nanofiber Filter follow the instructions provided below:

### CHECK THE CONTENT OF THE PACKAGING:

Inside the box, you will find:

- Nanofiber filter
- Nanofiber filter cartridge (inside the filter)
- Bag of components: Pressure gauge
- Connections
- Operating Instructions

### GENERAL CHARACTERISTICS:

The filter medium inside the cartridge is a treated nanofiber designed to separate dirt particles as small as 5 to 8 microns.

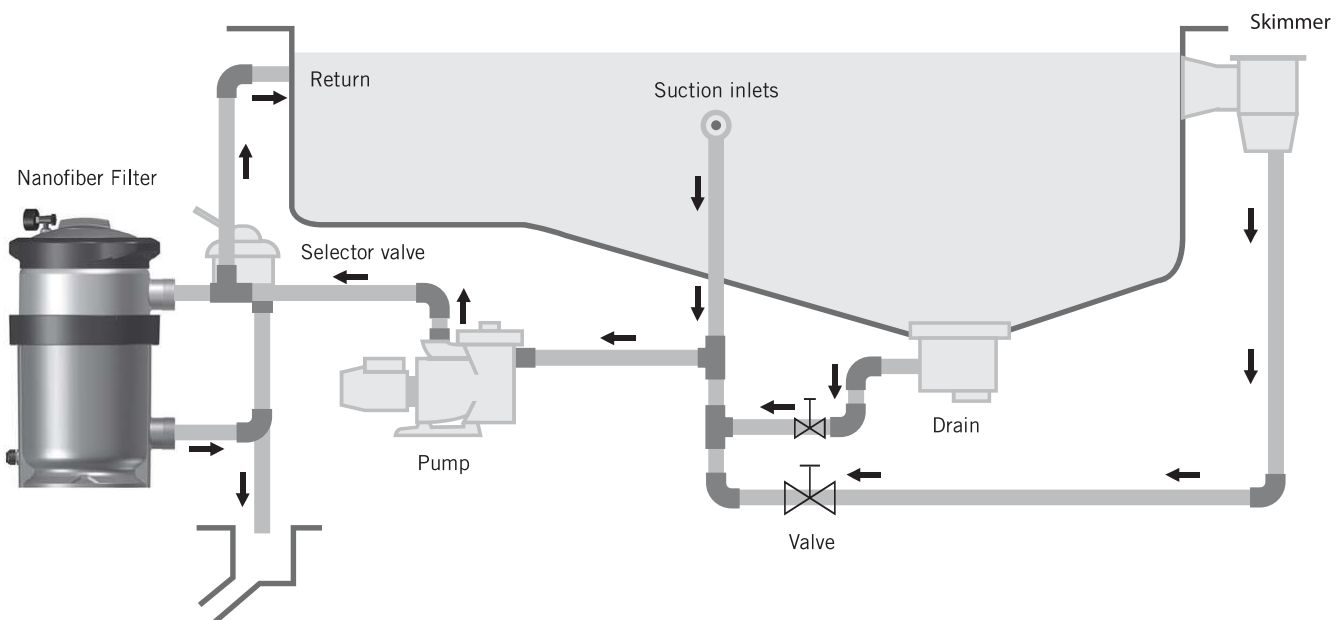
Under no circumstances may the manufacturer be held liable for the assembly, installation or start-up of the filter, nor for its subsequent handling, or the addition of hydraulic or electric components that have not already been installed in your facility.

### INSTALLATION:

The filter should be installed as close as possible to the swimming pool and preferably at a level of 0,50 metres below the surface of the water in the swimming pool. Make sure there is drainage available at the place where the filter is to be installed.

We recommend that the nanofiber filter be fitted together with an AstralPool multiport valve (code 07444).

**The valve is sold separately.**



### ATTENTION

If the filter is installed indoors, a correctly sized drain should be installed, to drain off as much water as possible from the swimming pool, to avoid flooding risks of the premises or adjoining areas. If this is not done, the filter manufacturer will not be held liable for possible damage to third parties caused by the filter. **Nanofibre is designed to work with clean water at temperatures that do not exceed 35 °C.**

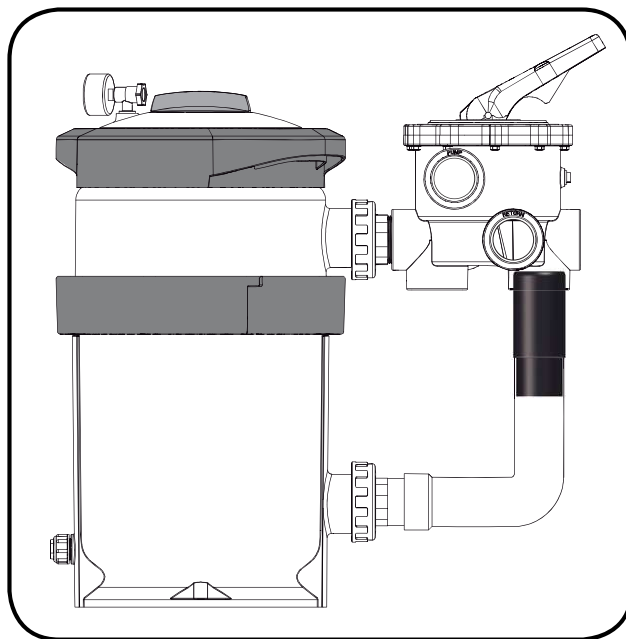
**IMPORTANT:** Do not use an iron and hemp pipe for the selector valve connection, it is essential to use plastic accessories and TEFLON tape. Pipe terminals are available threaded fixing in 1 ½ " and 2". Always leave enough space round the filter in order to perform the necessary examinations and maintenance during the filter's life.

## **ASSEMBLY:**

---

Follow these indications for a correct assembly of the filter:

- 1.- Place the filter on a horizontal and clean surface.
- 2.- Place the filter in its final position. There are three holes at the base of the filter to secure it in place. The fastenings are not supplied.
- 3.- Fit the 2" multiport valve (code 07444) inside the filter, whilst ensuring that the seals between the valve and the filter are in the correct position.
- 4.- Glue the sleeve (code 65289) to the bottom 2 connection that is supplied with the nanofiber filter.
- 5.- Perform the three connections of the selector valve: pump piping to the valve, valve to the waste drain and valve to the pool return. Each of these three outlets is clearly identified on the valve.



- Gluing sleeve 65289 -

- 6.- Set the manometer T, the joint, the manometer and the air drainage (see exploded view). It is not necessary to use teflon tape, as the watertightness is guaranteed in this case by the joint. Do not tighten the manometer T with a tool, as manually will be sufficient.



- Assembly of the manometer -

## **POSITION OF THE CARTRIDGE:**

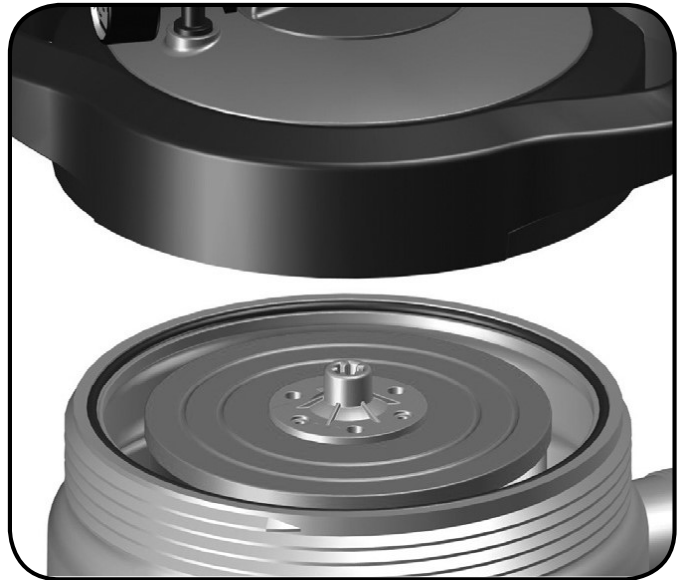
The cartridge comes properly fitted from the factory.

If you wish to remove the filter in the future, follow the steps described below:

1. Stop the filtration pump and set the valve to the Off position.
2. Open the drainage cap and release the air.
3. Unscrew and remove the cover assembly.
4. Remove the cartridge.
5. Put a new cartridge in place, check that it is well secured and that it can be turned with your hand.
6. Put the seal in place and check that it is firmly in position.
7. Screw the cover assembly back in.
8. Set the valve to the Filtration position.
9. Close the drainage cap until there is no longer any air inside the filter.

**Warning:** when the filter is running check that no water leaks from the lid.

**Note:** the manufacturer takes no responsibility for any damage to the filter when the cartridge is being changed.



## **SELECTOR VALVE:**

We recommend that the nanofiber filter be fitted together with an AstralPool multiport valve (code 07444). The selector valve has a handle of 6 positions that selects any of the necessary operations to obtain the maximum efficiency from the filter.

**IMPORTANT:** Always switch off the pump, when changing the position of the selector valve.

## **START-UP:**

The first time, proceed as follows:

- 1.- Open the air bleed cap to blow out the air.
- 2.- Place the selector valve in the "FILTER" position.
- 3.- Open the valves controlling the swimming pool suction pipes.
- 4.- Close the air bleed cap when water starts to come out.
- 5.- Run the pump and the filter will be ready to start the filtering cycles for the water in the swimming pool.

**IMPORTANT:** The pump should be switched off when the position of the selector valve handle is being changed.

## **FILTRATION:**

With the pump switched off, place the handle of the selector valve in the "FILTERING" position.

Switch on the pump.

When starting up for the first time, read the pressure of the pressure gauge. It is recommended to take note of this pressure, as later it will be used to know whether the filter is dirty and if “WASHING” is required. “WASHING” should be done when the pressure gauge indicates an increase of 0.5 kg/cm<sup>2</sup> with respect to the initial pressure of the filter. It is advisable to observe the pressure gauge from time to time as this indicates the degree of saturation of the filter. Bear in mind that the valves at the bottom of the pool and the skimmers will be adjusted according to the amount of floating particles on the surface of the water. The main drain and skimmer valves will be regulated according to the quantity of floating material found on the surface of the water. Bear in mind that with the main drain valve fully open there will be little suction from the skimmers. If the surface sweep of the skimmers is to be stronger, reduce the flow from the main drain.



**Example:**



0,8 kg/cm<sup>2</sup>: Initial pressure of the filter at the start of a filtering cycle.



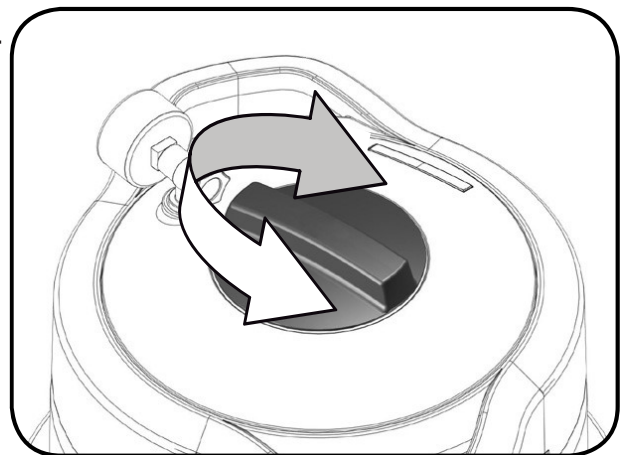
1,3 kg/cm<sup>2</sup>: The pressure is 0.5 kg/cm<sup>2</sup> more than the initial pressure, indicating that WASHING is required.

**Note:** the initial operating point will depend on the design of the installation and the flow rate used.

**BACKWASH:**

When the pressure has reached 0.5 kg/cm<sup>2</sup> above the initial pressure setting, this means that the cartridge cannot take in any more dirt and must be backwashed in the following way:

The multiport valve should be set to the Backwash position. Open the sump and non-return valves, and switch the pump on. **Turn slowly the orange lever at the top in every direction for 2 minutes.** Following this operation, all of the dirt obstructing the cartridge will have been poured into the drainage pipe.



**RECIRCULATE:**

In this position, the selector valve allows the water from the pump to go directly to the swimming pool without passing through the inside of the filter.



## WASTE:

---

If the swimming pool needs to be drained, this can be done using the filter pump. In order to do this, the selector valve should be in the “WASTE” position. The motor is run with the main drain valve fully open, for the pump to have sufficient suction. For the pump to suction, keep the prefilter and the main drain pipes full of water. Before drainage, make sure that the skimmer valves and the bottom cleaner valves are closed.



## RINSE:

---

After the carrying out the “BACKWASH” operation on the filter and placing the installation in the “FILTER” position, the water flowing into the swimming pool will be cloudy for a few seconds, so to prevent it from reaching the swimming pool there is a “RINSE” position for the selector valve which is operated as follows: immediately after the “BACKWASH” put the valve in the “RINSE” position and switch on the pump for 1 minute, after which the pump is switched off and the valve placed in the “FILTER” position. This position ensures that the filtered water goes directly to the drain.



## CLOSED:

---

As its name indicates, this position is for closing off the water from the of the filter pump and it is used for opening the collector prefilter of the pump.



## MAINTENANCE:

---

Do not use solvents for cleaning the filter, this could damage the filter, especially its finish.

Always replace the joints and pieces that may not be in good condition. Backwash and rinse when needed, as per the instructions specified in this manual.

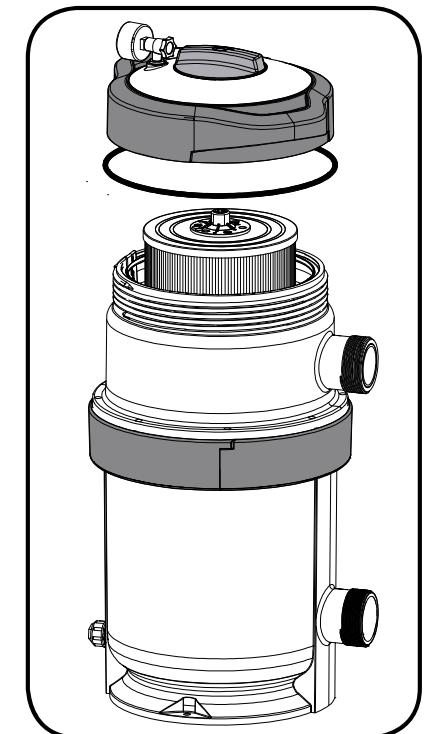
**It's recommended to change the cartridge the filter approximately every 3 years.**

## CARTRIDGE ASSEMBLY:

---

If you replace a cartridge, you should proceed as follows. Thoroughly clean the inside of the cartridge and the seat of the seal in the cover assembly. Check that all parts are in a good state of repair, free of cracks and blemishes.

- Place the cartridge in its correct position. Gently press it downwards.
- Place the seal of the cover in its housing, subsequent to removing any traces of dirt in the housing.
- Tighten the screw on the cover as far as it will go.



- Once the cover assembly has been screwed in, follow the instructions in the Start-up section.

## **WINTERISING:**

---

At the end of the bathing season, it is recommended that the filter be emptied to prevent damage to its components. To do so, follow these steps:

- Stop the pump.
- Close the valves of the suction and discharge pipes in order to isolate the filter.
- Open the drainage cap of the pressure gauge on top of the filter.
- Open the pressure gauge at the bottom of the filter.
- Empty the filter completely.
- Disassemble the filter.
- Clean all dirt from inside the filter.
- Clean the cartridge if necessary using a hose.
- Store the cartridge in a dry place protected from frost.
- Cover the filter with a bag to protect it from water and sunlight.
- Empty all pipes to prevent them from bursting due to freezing.

## **TROUBLESHOOTING:**

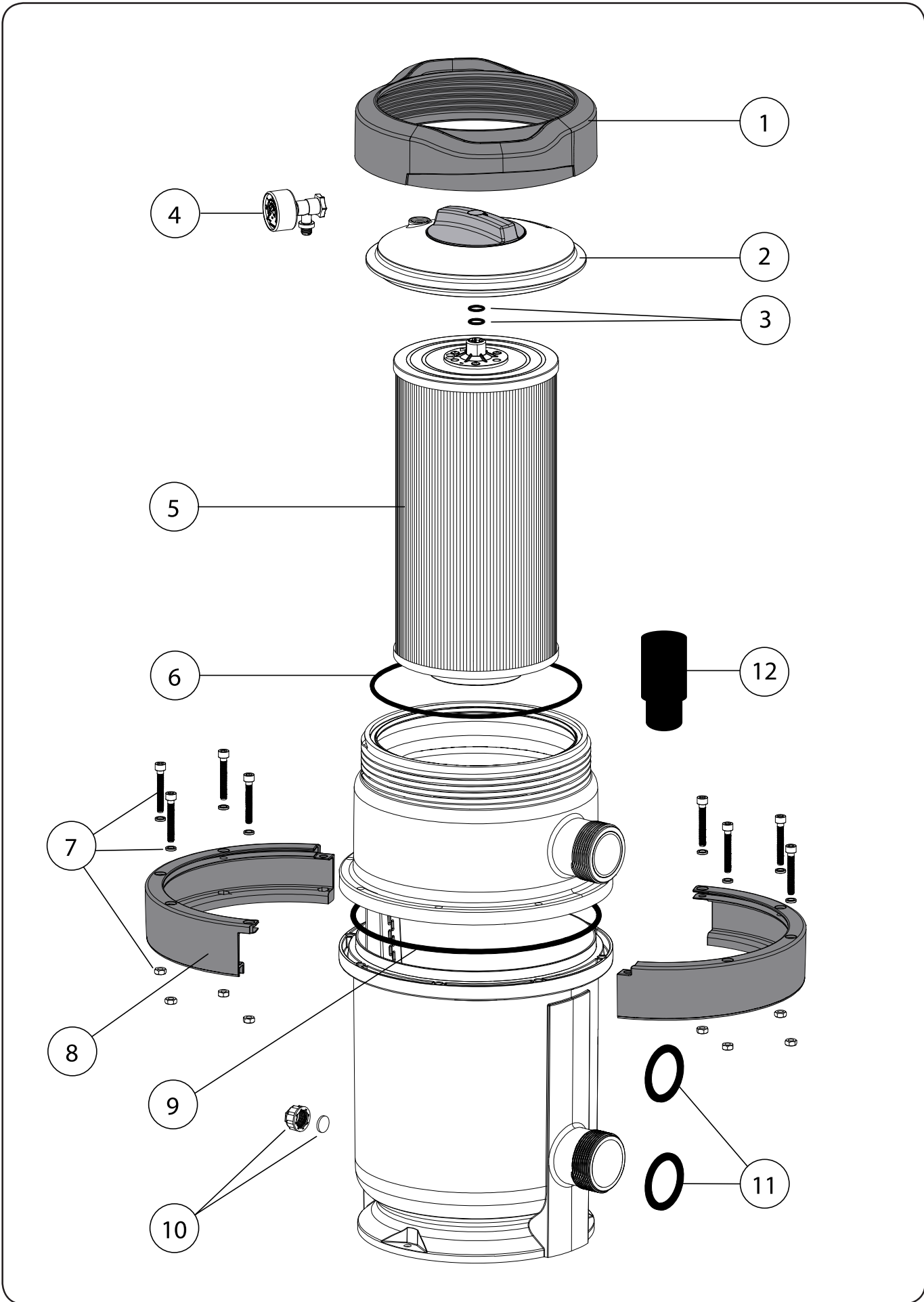
---

<b>PROBLEM</b>	<b>CAUSE</b>	<b>SOLUTION</b>
Low filtration flow rate	Pump prefilter dirty	Clean the prefilter
	Cartridge dirty	Clean the cartridge
	Pipe blocked	Check valves, piping, etc.
	Pump motors turn the wrong way round	Change the direction of rotation
Pulsation of the pressure gauge	Air is entering the pump	Repair any possible leaks
	Suction valve not fully open	Open the suction valves
Rapid pressure increase	Cartridge dirty	Clean the cartridge
	Algae in the pool	Chemical treatment of the water
	Cartridge dirty that has been used flocculant	Remove the filter cartridge and clean with pressure hose
Water not clean enough	Chemical treatment unsuitable	Change chemical treatment
	Cartridge dirty	Clean the cartridge

## **SAFETY WARNINGS:**

---

- **Never start up the system without water.**
- **Never allow children or adults to sit on the system.**
- **Do not connect the filter directly to the water network, as the pressure of the water may be too high and exceed the maximum work pressure allowed by the filter.**
- **Do not use the filtering circuit to fill and adjust the water level of the pool. A handling error may lead to overpressure in the filter.**
- **Do not clean the lid with solvents, as it may damage its properties (finish, transparency ...).**
- **As all the connections are made with joints, it is not necessary to tighten the nuts excessively in order to avoid that some plastic pieces could break.**
- **DO NOT use teflon in the T-part of the pressure gauge Kit, code 00545R0300, to ensure sealing.**
- **DO NOT use chemicals in powder form to treat the pool water as the filter could block up.**





**ENGLISH**

ID.	CODE	DESCRIPTION	NanoFiber 150	NanoFiber 180	NanoFiber 200	Q.
1	64837-0013	Upper thread	X	X	X	1
2	64837-0500	Cover assembly	X	X	X	1
3	8070155026	O-ring seal shaft	X	X	X	2
4	64837-0550	Pressure gauge	X	X	X	1
5	64837-0150	NanoFiber 150 cartridge	X			1
5	64837-0180	NanoFiber 180 cartridge		X		1
5	64837-0200	NanoFiber 200 cartridge			X	1
6	64837-0014	Cover seal	X	X	X	1
7	64837-0540	Fastenings	X	X	X	1
8	64837-0003	Flange	X	X	X	2
9	77A2975070	Flange seal	X	X	X	1
10	64837-0530	Drainage cap assembly	X	X	X	1
11	00544-0106	Flat connection seals	X	X	X	2
12	65289	Adaptor sleeve	X	X	X	1

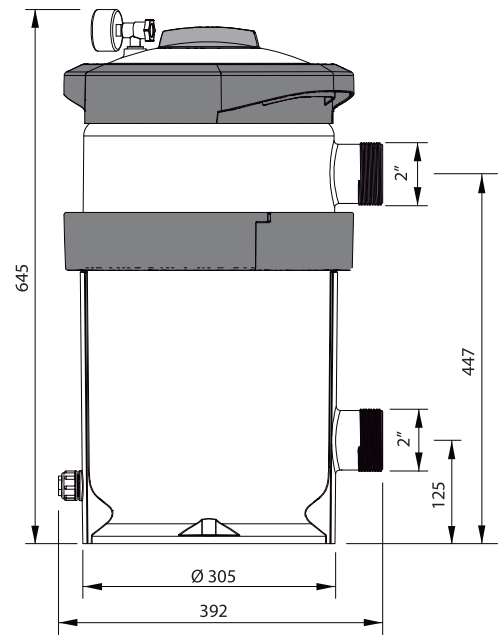
**FRANÇAIS**

ID.	CODE	DESCRIPTION	NanoFiber 150	NanoFiber 180	NanoFiber 200	Q.
1	64837-0013	Vis supérieure	X	X	X	1
2	64837-0500	Ensemble couvercle	X	X	X	1
3	8070155026	Joint torique axe	X	X	X	2
4	64837-0550	Manomètre	X	X	X	1
5	64837-0150	Cartouche NanoFiber 150	X			1
5	64837-0180	Cartouche NanoFiber 180		X		1
5	64837-0200	Cartouche NanoFiber 200			X	1
6	64837-0014	Joint du couvercle	X	X	X	1
7	64837-0540	Boulonnerie	X	X	X	1
8	64837-0003	Bride	X	X	X	2
9	77A2975070	Joint bride	X	X	X	1
10	64837-0530	Ensemble bouchon de purge	X	X	X	1
11	00544-0106	Joints planches de branchements	X	X	X	2
12	65289	Manchon adaptateur	X	X	X	1

**ESPAÑOL**

ID.	CÓDIGO	DESCRIPCIÓN	NanoFiber 150	NanoFiber 180	NanoFiber 200	CA
1	64837-0013	Rosca superior	X	X	X	1
2	64837-0500	Conjunto Tapa	X	X	X	1
3	8070155026	Junta torica eje	X	X	X	2
4	64837-0550	Manómetro	X	X	X	1
5	64837-0150	Cartucho NanoFiber 150	X			1
5	64837-0180	Cartucho NanoFiber 180		X		1
5	64837-0200	Cartucho NanoFiber 200			X	1
6	64837-0014	Junta Tapa	X	X	X	1
7	64837-0540	Tornilleria	X	X	X	1
8	64837-0003	Brida	X	X	X	2
9	77A2975070	Junta brida	X	X	X	1
10	64837-0530	Conjunto tapon purga	X	X	X	1
11	00544-0106	Juntas planas de conexiones	X	X	X	2
12	65289	Manguito adaptador	X	X	X	1

- TECHNICAL CHARACTERISTICS
- CARACTERISTIQUES TECHNIQUES
- CARACTERÍSTICAS TÉCNICAS
- DATI TECNICI
- TECHNISCHE ANGABEN
- CARACTERISTICAS TECNICAS



Description	FILTER NANOFIBER		
	64837	64838	64839
Flow / Débit / Caudal / Portata / Leistung / Caudal	10 m <sup>3</sup> /h	14 m <sup>3</sup> /h	18 m <sup>3</sup> /h
Filtration area / Surface filtration / Superficie de filtración / Filteroberfläche / Superficie de filtração	4,5 m <sup>2</sup>	5,2 m <sup>2</sup>	6,0 m <sup>2</sup>
Máximum working pressure / Pression maximale de travail / Presión de trabajo máx. / Max. pressione di lavoro / Max arbeitsdruck / Pressao maxima de trabalho	2,5 kgr./cm <sup>2</sup>		

**Made in SPAIN**

Sacopa, S.A.U.

Pol. Ind. Poliger Sud – Sector I  
17854 Sant Jaume de Llierca (Spain)

ASTRALPOOL

Avda. Francesc Macià, 60, pl 20  
08208 Sabadell (Barcelona) Spain  
info@astralpool.com

64837E201-03

- We reserve to change all or part of the articles or contents of this document, without prior notice.
- Nous nous réservons le droit de modifier totalement ou en partie les caractéristiques de nos articles ou le contenu de ce document sans pré avis.
- Nos reservamos el derecho de cambiar total o parcialmente las características de nuestros artículos o contenido de este documento sin previo aviso.
- Ci riserviamo il diritto di cambiare totalmente o parzialmente le caratteristiche tecniche dei nostri prodotti ed il contenuto di questo documento senza nessun preavviso
- Wir behalten uns das recht vor die eigenschaten unserer produkte oder den inhalt dieses prospektes teilweise oder vollstanding, ohne vorherige benachichtigung zu andern.
- Reservamo-nos no dereito de alterar, total ou parcialmente as características dos nossos artigos ou o conteúdo deste documento sem aviso prévio