



www.  
**water-garden**  
.co.uk

# Owners Manual

## 50Hz Fountains

**2400EVX, 3400EVX, 4400EVX**

**2400EJ, 3400EJ, 4400EJ**

### Contents

Important Safety Instructions	.....pg2
General description of equipment and function	.....pg2
Intended use and limits of use	.....pg2
Installation requirements:	.....pg2
Unit Specs	.....pg3
Utility requirements:	.....pg3
Quick Disconnect Installation	.....pg3
Wire Sizing & Gland Sizing	.....pg5
2400EVX, 2400EJ, 3400EVX, 3400EJ, 4400EVX Parts	.....pg5
EVFX Pattern Size Chart	.....pg5
2400EVX, 2400EJ, 3400EVX, 3400EJ, 4400EVX Assembly Instructions	.....pg6
4400EJ Parts	.....pg8
4400EJ Assembly	.....pg9
2400EJ, 3400EJ, 4400EJ Nozzle Options	.....pg11
Installation Instructions	.....pg12
Maintenance Recommendations	.....pg13
Troubleshooting Tips	.....pg16

Water Garden Ltd  
Unit 7 Warrior Business Centre  
Fitzherbert Road  
Farlington  
Portsmouth - Hampshire  
PO6 1TX

Email: [contact@water-garden.co.uk](mailto:contact@water-garden.co.uk)  
Tel: 02392 373735

Rev. 28/03/19





CAUTION



NOTICE (NOTE)

These international safety symbols are used throughout this manual to inform the owner of important safety information and notices for safe and effective use of the equipment.

## Important Safety Instructions



CAUTION

- **Under NO circumstances should anyone enter the water with the electrical equipment connected and/or in operation. It is NEVER recommended to enter the water with the equipment in operation.**
- **Caution should be used when dealing with any electrical equipment with moving parts.**
- **NEVER run the unit out of water. It will damage the seals and create a dangerous situation for the operator.**
- **Extreme caution should be used around water, especially cold water, such as in Spring, Fall, and Winter, which poses a hazard in and of itself.**
- **NEVER lift or drag the unit by the power or light cord. If you need to pull the unit to the side of the pond, use the anchoring ropes.**
- **Do not use waders in deep ponds/lakes or ponds/lakes with drop-offs, drastic slopes, or soft bottom material.**
- **Do not use boats that tip easily for fountain installation, such as a canoe, and follow all boating safety rules and regulations, including wearing a PFD. (Personal Flotation Device)**
- **The unit is supplied with an internal grounding conductor. To reduce the risk of electrical shock, be certain that the unit is plugged/connected to an approved RCD (GFCI) protected circuit.**
- **Means for disconnection must be incorporated in the fixed wiring in accordance with local and national wiring rules.**
- **Consult a qualified electrician for electrical installation.**

## General description of equipment and function

Fountain/decorative aerator

Electrically driven submersible pump designed to improve water quality with water movement and aeration in a decorative display.

### Intended use and limits of use

This equipment is only intended for specific uses as detailed in this owner's manual. Intentional misuse could result in injury, damage to the product, and surrounding property.

Intended uses are as follows:

Fountains/decorative aerators: To provide aeration and a decorative display to ponds, lakes, and similar bodies of water. Fountains and decorative aerators are provided with additional guarding to prevent accidental contact while operating.

Installation, adjustment, maintenance, and removal of this equipment should be limited to experienced maintenance persons or trained professionals. If you are not sure how to install or operate this equipment contact an electrician, or contact Water Garden Ltd at [www.water-garden.co.uk](http://www.water-garden.co.uk) for further assistance.

### Installation requirements:

- Read and understand all instructions and safety warnings prior to installation and use.
- Equipment must be installed as required by the instructions.
- Do not use this equipment outside of its intended purpose, or if site conditions would pose a dangerous installation.
- To be installed and operated only by an adult. Not to be used by children.
- Never install in areas where swimming is allowed or where people enter the water.
- Never use in a swimming pool.
- Do not use this equipment for intentional weed removal, sediment removal or dredging.
- Follow all local and national electrical wiring rules for the electrical circuit feeding this equipment. Failure to comply may result in injury.
- All equipment must be powered from an RCD (residual current device) or GFCI (ground fault

- circuit interrupter) protected circuit.
- Do not modify any mounting hardware or guarding provided with this equipment. All guarding purchased with a unit must be installed.
- This equipment is intended to operate without interaction from personnel. Never to be manipulated, moved, maintained, or adjusted while in operation. Damage or injury could result.
- The general public must be made aware of the installation and warned of the installation to prevent misuse or interference with the equipment.
- This equipment is intended to be used in water only. The equipment should only be operated out of water if required to troubleshoot operation and during initial startup of the equipment. The instructions provide detailed warnings and instructions for such activities and should only be performed by a trained person.

### Unit Specs

Model	Voltage range	Operating amps	lock rotor amps
2400EVX	208-240	2.2@220V	6@220V
3400EVX	208-240	3.6@220V	9@220V
4400EVX	208-240	5.9@220V	20@220V
2400EJ	208-240	2.8@220V	6@220V
3400EJ	208-240	3.4@220V	9@220V
4400EJ	208-240	6.5@220V	20@220V

### Utility requirements:

The Electrical circuit must be provided to supply sufficient voltage and amperage to the unit. These ratings are listed in the above table (unit specs). This circuit must also include a disconnect means and short circuit protection.

### Quick Disconnect Installation

#### Important – Read Carefully Before Installation

Before using the connector, it is important that these instructions are carefully read and understood to ensure the connector system is completely water tight

and electrically safe.

IF IN DOUBT CONSULT A QUALIFIED ELECTRICIAN.

The socket (female) insert of the connector must be the live part of the connector from the supply. The pin (male) insert of the connector must lead to the load or electrical device. On 50Hz units, the pin (male) insert of the connector is installed at the factory. To ensure efficient sealing, use only smooth circular cable.

### Pin Insert (Installed on Stub Cord)



### Socket Insert (User Installed)



Note:

White gland for 9-11mm O.D.  
Yellow gland for 13-15mm O.D.

### Assembly/Wiring Instructions

1. Remove the socket insert from the housing of the connector. There is a slot for a flat blade screwdriver in the center of the insert.



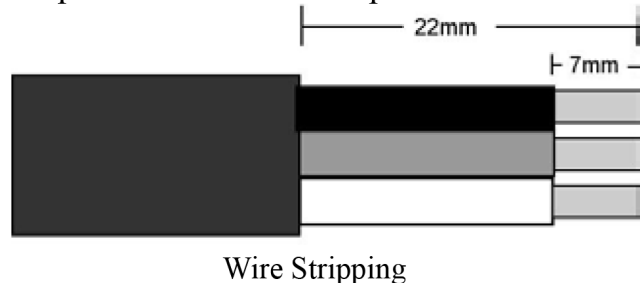
Note: The inserts have a LEFT HAND THREAD and should be turned clockwise to remove.

2. Remove the gland nut and gland from the rear of the housing and slide on to the cable. Make sure the gland is orientated with the stepped edge facing the gland nut (see picture).

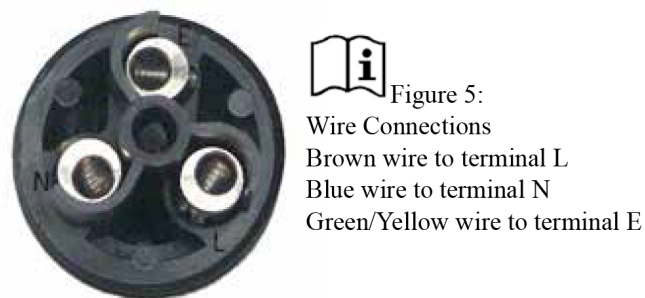
Stepped Edge



3. Prepare the cable and strip wire ends as shown.

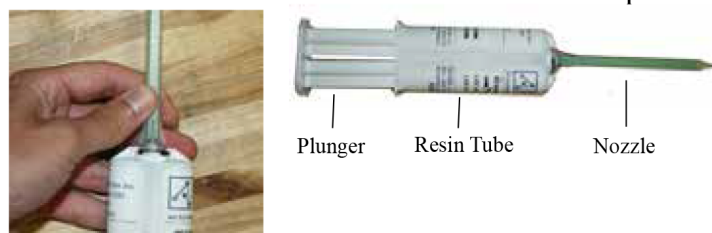


4. Insert the stripped wire ends into the terminals on the back of the Pin/Socket insert and fully tighten the wire retention screws. (Refer to figure for correct wire orientation).




After the wires have been connected securely, pull the cable and insert back into the housing and tighten with a screwdriver to ensure the insert is seated correctly.  
Note: LEFT HAND THREAD, turn the insert counter clockwise to tighten.

5. Prepare your supplied Resin Kit by removing the cap from the resin tube and pushing the resin nozzle onto the tube. Then twist the nozzle to lock in place.



Before applying to the quick disconnect, use the plunger to evenly push out a small amount of resin to get a proper mix of the 2-part epoxy. Then apply resin into the housing, enough to cover the wires and contacts. The resin should be about 3mm onto the cord jacket. Note: Adding too much resin may cause excess to be forced into the female end of the pin connector, preventing proper connection of the two halves.



 Cut-Away disconnect shown with clear resin. Note amount that is covering cord jacket.

6. Slide the gland and gland nut along the cable into the body and tighten the gland nut securely. No drying time is needed for the epoxy before full assembly.



7. Once the two subassemblies have been completed, they can be joined together. Plug pin assembly into the socket assembly and tighten the large blue nut securely. The blue nut should be hand tightened only. (See figure below).



Note: There is a small gap after tightening

For seasonal removal, your quick disconnect includes an optional water tight cover. Simply separate the quick disconnect and insert the sealing cover into the large blue nut half and tighten firmly.

### Strain Relief

The Strain Relief must be installed to protect the Quick Disconnect from damage due to excessive strain. The Strain Relief should be installed on the user supplied cord length (not on the supplied stub cord). It should be position about 15cm from the Quick Disconnect. To install, insert the narrow end of the elongated clamp with the chain connected into the wide end of the short clamp. Use a rubber mallet to tap the two pieces together securely. A Nylon Tie can be used to keep it attached to the cord. The chain can then be attached to the float.





## Wire Sizing & Gland Sizing

The chart below shows the proper Gland to be used with different cord sizes. The measurements are based on the Outside Diameter (O.D.) of the cord. Smooth, round cords should be used.

Kasco Quick Disconnect 50 Hz Size Chart:

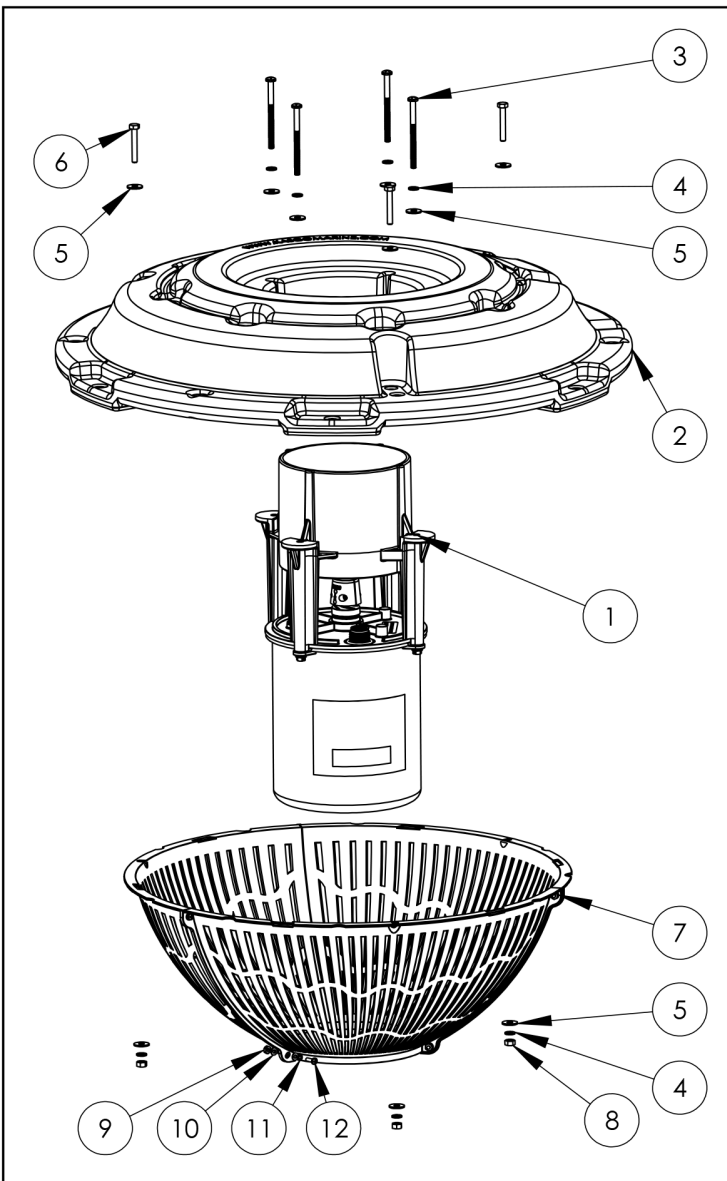
Gland	O.D. of Cord
Grey	7-9mm
White	9-11mm
Black	11-13mm
Yellow	13-15mm

Kasco 50 Hz Equipment Wire Size Chart

Model	Cord Length			
	10m	30m	60m	90m
2400EVX	1.5mm <sup>2</sup>	1.5mm <sup>2</sup>	2.5mm <sup>2</sup>	2.5mm <sup>2</sup>
2400EJ	1.5mm <sup>2</sup>	1.5mm <sup>2</sup>	2.5mm <sup>2</sup>	2.5mm <sup>2</sup>
3400EVX	1.5mm <sup>2</sup>	1.5mm <sup>2</sup>	2.5mm <sup>2</sup>	2.5mm <sup>2</sup>
3400EJ	1.5mm <sup>2</sup>	1.5mm <sup>2</sup>	2.5mm <sup>2</sup>	2.5mm <sup>2</sup>
4400EVX	1.5mm <sup>2</sup>	1.5mm <sup>2</sup>	2.5mm <sup>2</sup>	4mm <sup>2</sup>
4400EJ	1.5mm <sup>2</sup>	1.5mm <sup>2</sup>	2.5mm <sup>2</sup>	4mm <sup>2</sup>

## 2400EVX, 2400EJ, 3400EVX, 3400EJ, 4400EVX Parts

- EV or EJ Aerating Fountain (Unit with cord or stub cord) (1)
- Float(with two 50' mooring ropes attached) (1)
- 1/4"-20 long Phillips Pan Head Screw (4)
- 1/4" split washers (7)
- 1/4" (3/4" outer diameter) Flat Washer (10)
- 1/4"-20 x 1-3/4" Hex Head Bolt (3)
- Bottom Screen Section (3)
- 1/4"-20 Nut (2)
- #8 nut (6)
- #8 flat washer (12)
- #8 lock washer (6)
- #8 x 1/2" Screw (6)



Also included: (not pictured)

- Interchangeable nozzles for 2400EJF, 3400EJF only (See 2400EJ 3400EJ Nozzle Options section)
- Nylon Cable Tie

## TOOLS & SUPPLIES NEEDED

- Anchors or stakes for installing unit (2)
- # 2 Phillips head screw driver
- 208-240V Electrical Supply near pond on a post
- 7/16" (12mm) Socket and Ratchet
- 7/16" (12mm) Wrench

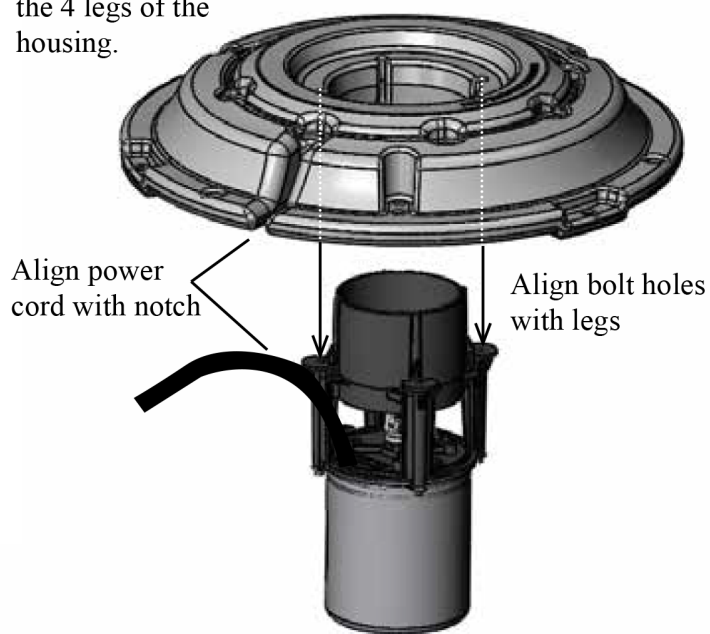
## EVFX Pattern Size Chart

All produce a V-shaped display.

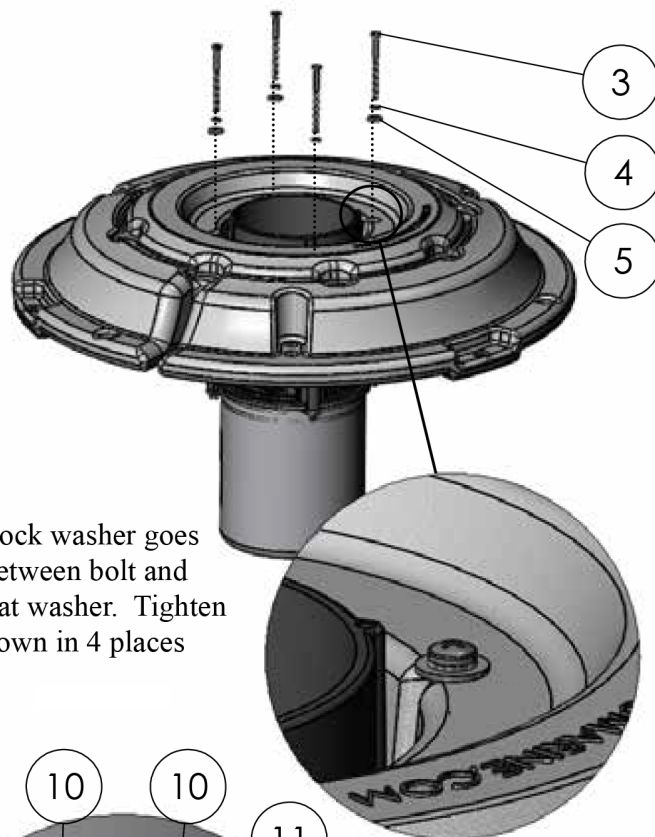
Model	Height	Width
2400EVX	1.15 m	4.3 m
3400EVX	1.7 m	6.1 m
4400EVX	1.7 m	6.7 m

# 2400EVX, 2400EJ, 3400EVX, 3400EJ, 4400EVX Assembly Instructions

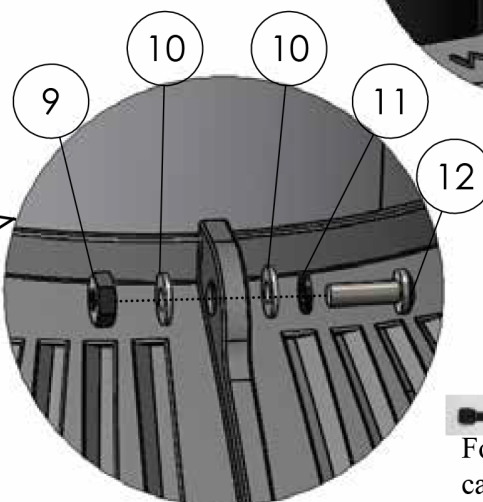
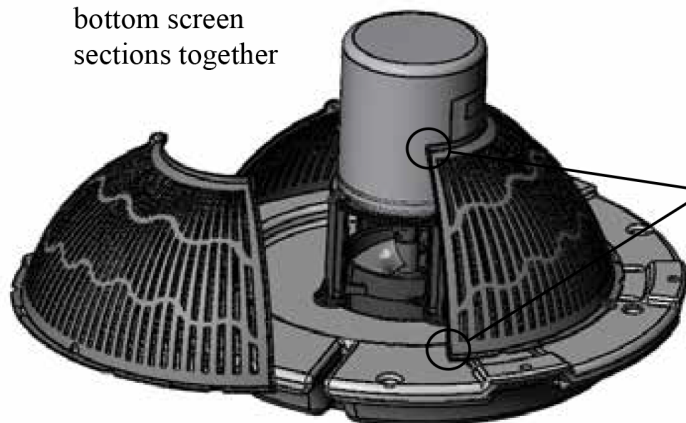
1. Rest the float on the 4 legs of the housing.



2. Lock washer goes between bolt and flat washer. Tighten down in 4 places



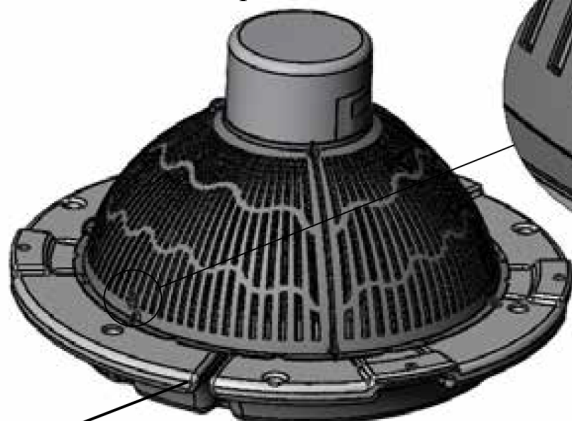
3. Turn over. Bring bottom screen sections together



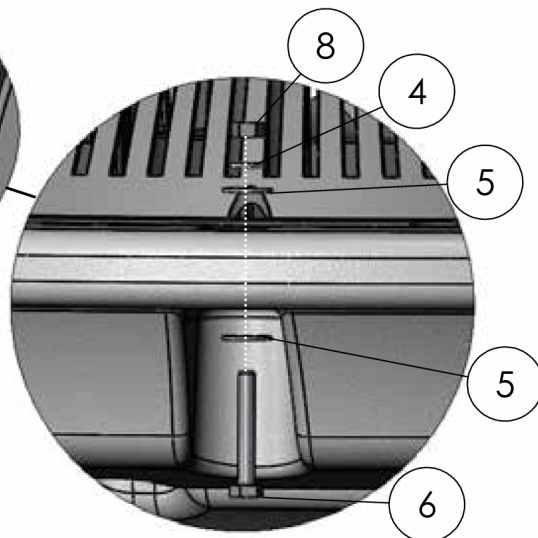
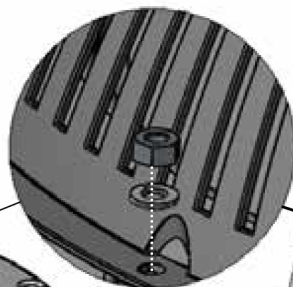
4. Tighten down in 6 places to hold the screen together.

For quicker assembly, use cable tie instead

5. Secure the bottom screen to the float in 3 places.

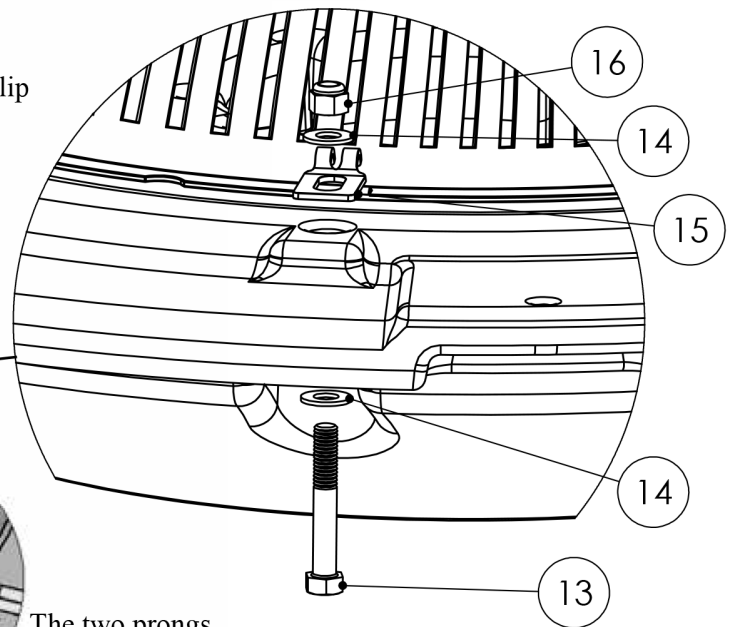
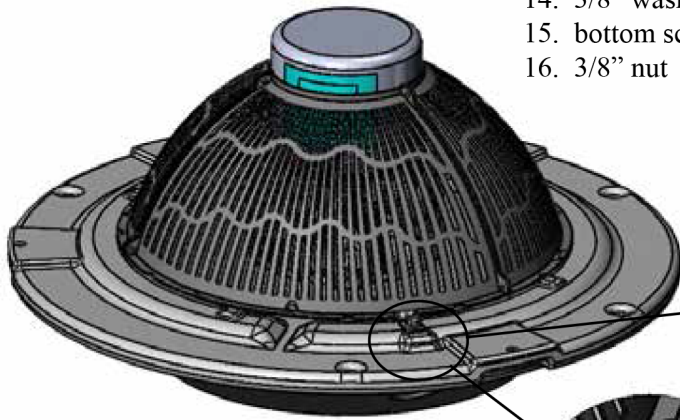


Make sure cord is sticking out of notch



4400EVX only

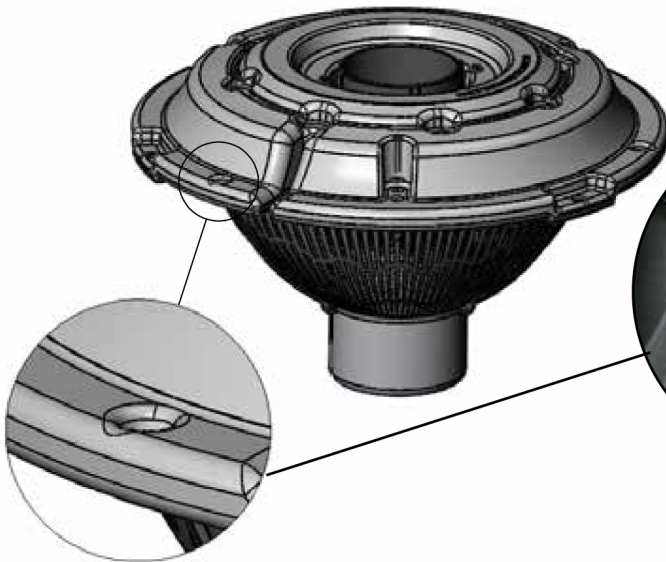
- 13. 3/8" bolt
- 14. 3/8" washer
- 15. bottom screen clip
- 16. 3/8" nut



6. Secure the bottom screen to the float with the screen clip and hardware.

The two prongs on the clip should straddle a wire on the screen

7. Turn upright. Secure power cord to rope hole



With Strain Relief

Without Strain Relief



OR

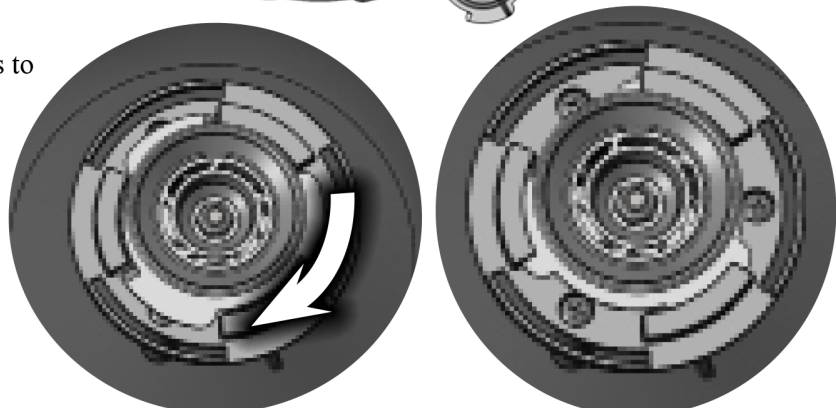
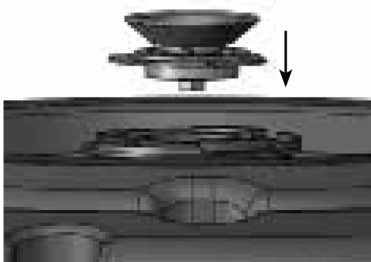


Shipped with Sequoia nozzle preinstalled



2400EJ  
3400EJ only

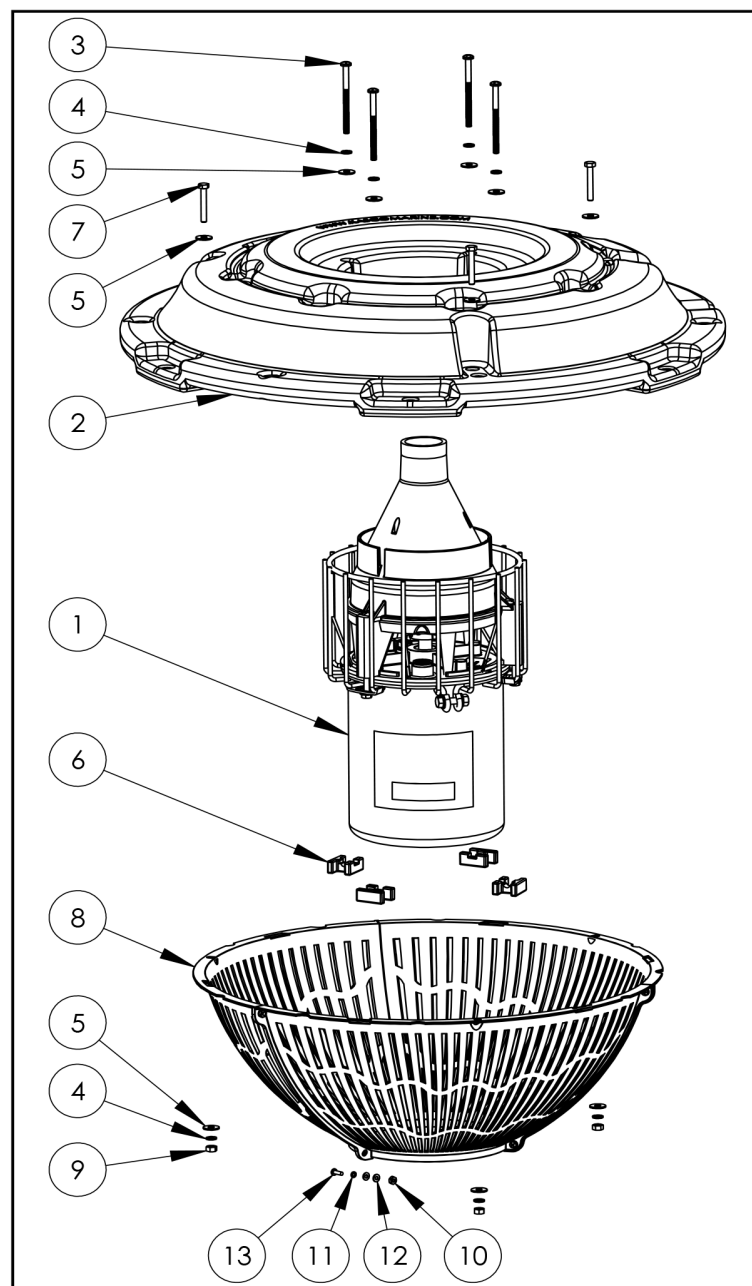
8. Choose Nozzle. Push nozzle into cone and twist the 3 tabs to lock into the nozzle plate.



9. If ready to install in the pond, go to Installation instructions.

## 4400EJ Parts

1. Aerating Fountain (Unit with cord or unit with Disconnect) (1)
  2. Float (with two 50' mooring ropes attached) (1)
  3. 1/4-20 x 4" Phillips Pan Head Screw (4)
  4. 1/4" split washers (4)
  5. 1/4" (3/4" outer diameter) Flat Washer (10)
  6. Float Retaining Clips (4)
  7. 1/4" x 1-3/4" Hex Head Bolt (3)
  8. Bottom Screen section (3)
  9. 1/4"-20 Nut (3)
  10. #8 nut (6)
  11. #8 flat washer (12)
  12. #8 lock washer (6)
  13. #8 x 1/2" Screw (6)
- 4400EJ only:
14. 3/8" bolt (2)
  15. 3/8" washer (4)
  16. bottom screen clip (2)
  17. 3/8" nut (2)



Also included: (not pictured)

18. Interchangeable nozzles

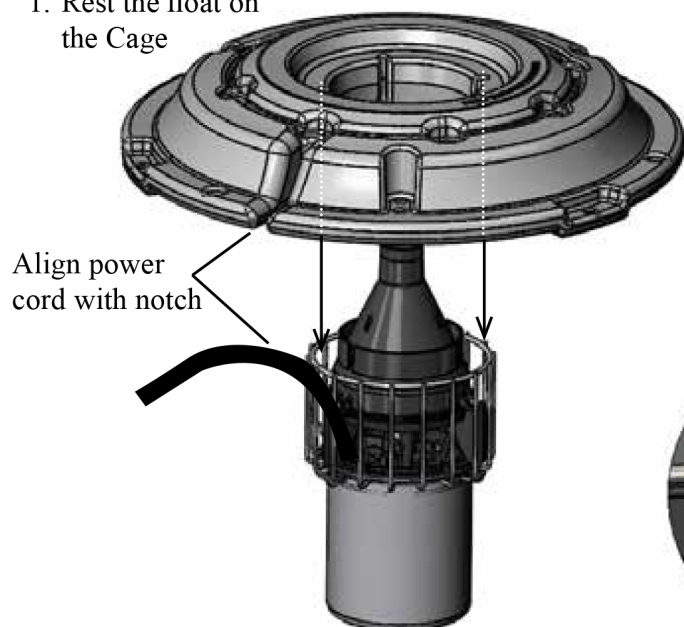
(See 3400EJ, 4400EJ Nozzle Options section)

19. Nylon Cable Tie

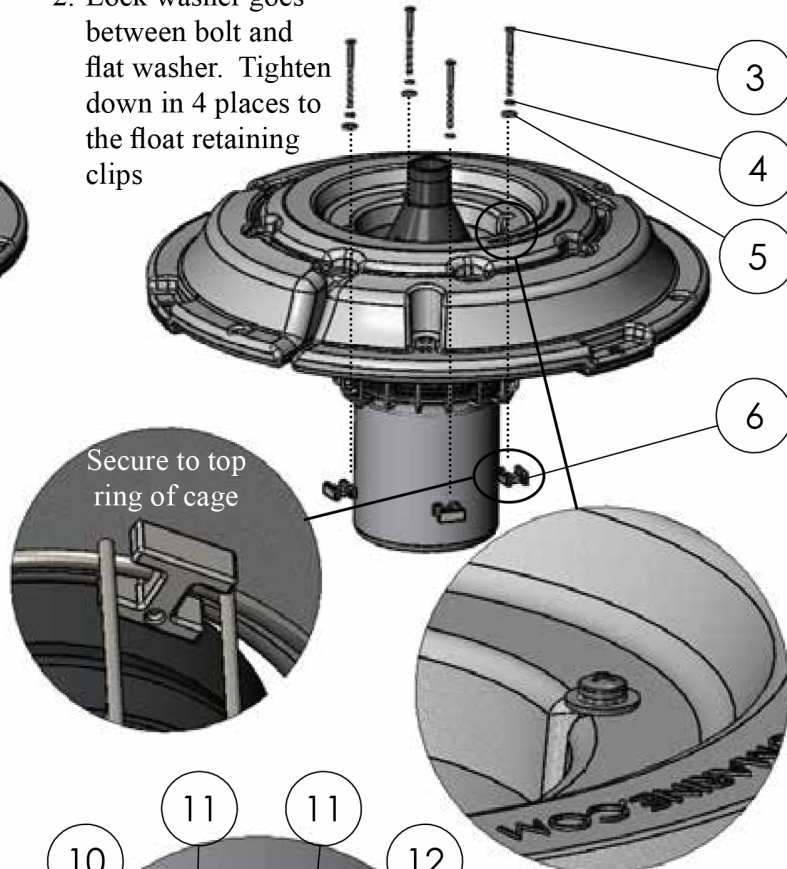


# 4400EJ Assembly

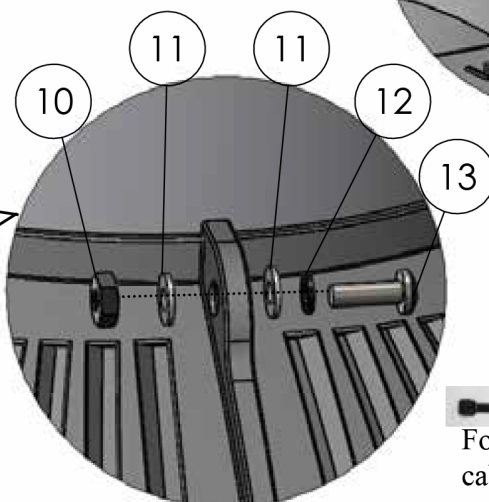
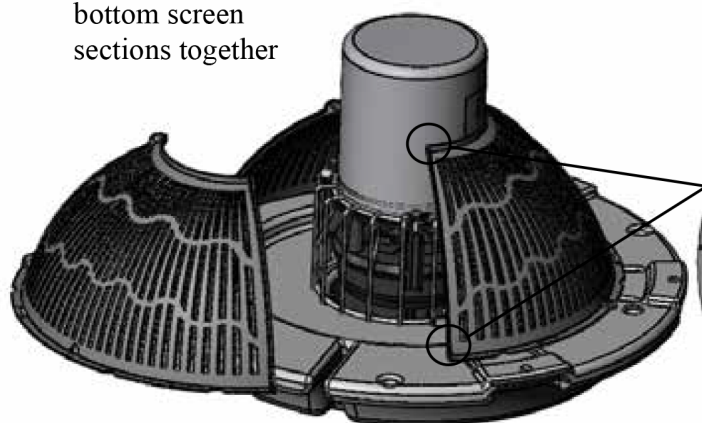
1. Rest the float on the Cage



2. Lock washer goes between bolt and flat washer. Tighten down in 4 places to the float retaining clips



3. Turn over. Bring bottom screen sections together



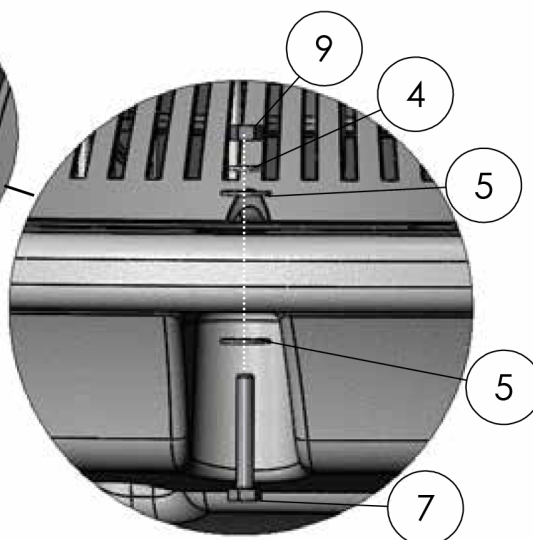
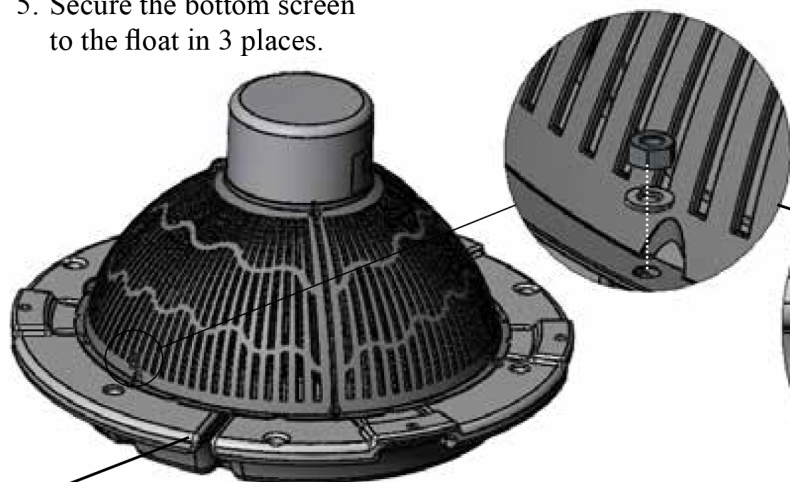
4. Tighten down in 6 places to hold the screen together.



For quicker assembly, use cable tie instead

3400EJ only

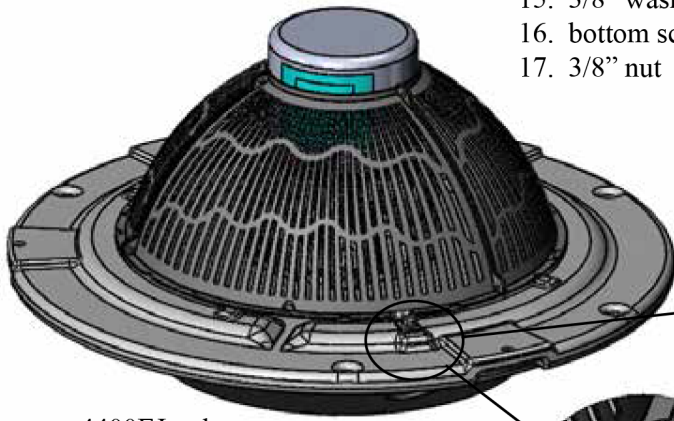
5. Secure the bottom screen to the float in 3 places.



Make sure cord is sticking out of notch

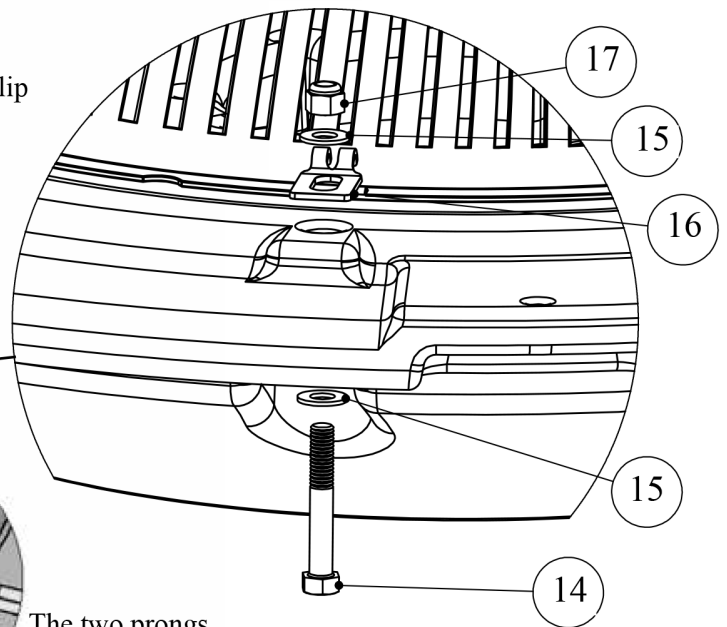


- 14. 3/8" bolt
- 15. 3/8" washer
- 16. bottom screen clip
- 17. 3/8" nut



4400EJ only

6. Secure the bottom screen to the float with the screen clip and hardware.



The two prongs on the clip should straddle a wire on the screen

7. Turn upright. Secure power cord to rope hole



With Strain Relief

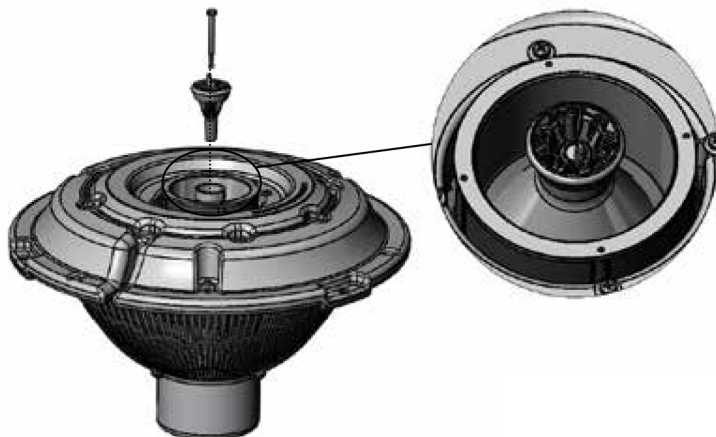


OR

Without Strain Relief



8. Choose Nozzle. Fit bolt into the molded socket on the nozzle and thread into the inner cone of the pump.



9. If ready to install in the pond, go to Installation instructions.

## 2400EJ, 3400EJ, 4400EJ Nozzle Options



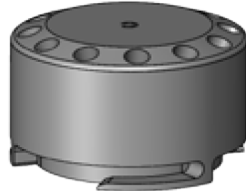
NOTE: Pattern sizes listed are approximate. Variations in voltage caused by regional electrical differences or voltage drop due to long power cords may result in reduced pattern sizes.

- The Sequoia nozzle uses the shorter 3/8" x 2.25" bolt.

To install, simply drop the bolt through the nozzle and thread into the top of the cone on the fountain.

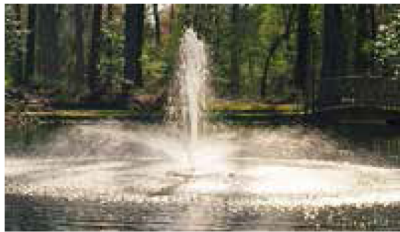
### Cypress Display:

The Cypress nozzle (marked C on part)



Model	Height	Width
2400EJ	1.8 m	4.5 m
3400EJ	2.1 m	5.5 m
4400EJ	n/a	n/a

### Linden Display:



2400EJ, 3400EJ



4400EJ



Model	Height	Width
2400EJ	2.3 m	6.7 m
3400EJ	2.7 m	8.5 m
4400EJ	3.4 m	7.3 m

### Willow Display:

2400EJ and 3400EJ: no nozzle installed.

4400EJ: The Willow nozzle (marked W on the inside of the cone) uses the 3/8" x 4" bolt.



2400EJ, 3400EJ:  
no nozzle installed

4400EJ

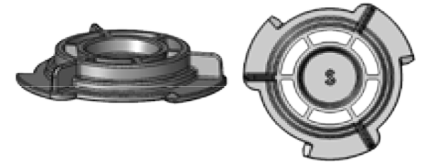


Model	Height	Width
2400EJ	1.6 m	5.2 m
3400EJ	1.9 m	5.8 m
4400EJ	2.4 m	7.0 m

### Sequoia Display: (marked S on part)



2400EJ, 3400EJ



Model	Height	Width
2400EJ	3.2 m	2.4 m
3400EJ	3.5 m	2.4 m
4400EJ	n/a	n/a

### The Birch :

2400EJ, 3400EJ: (marked B on the part)

4400EJ: no nozzle installed.

2400EJ, 3400EJ



4400EJ:  
no nozzle installed

Model	Height	Width
2400EJ	1.7 m	1.5 m
3400EJ	2.1 m	2 m
4400EJ	2.6 m	1.8 m



**4400EJ only nozzles:**

**Juniper Display:** The Juniper nozzle (marked with J on in inside of the nozzle cone) uses the 3/8” x 4” bolt.



Model	Height	Width
4400EJ	1.8 m	8.8 m

The **Redwood** nozzle uses the 3 self tapping screws to attach over the pump housing and the Y Insert must be installed.



Model	Height	Width
4400EJ	4.9 m	1.5 m

The **Spruce** nozzle uses the three self tapping screws to attach over the pump housing and the Y Insert must be removed.

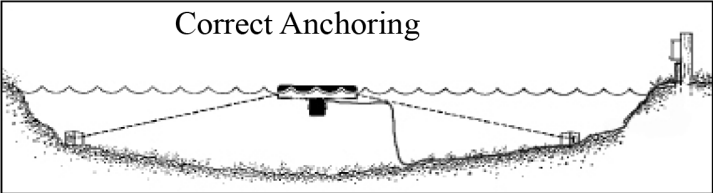


Model	Height	Width
4400EJ	4.1 m	3.0 m

**Installation Instructions**

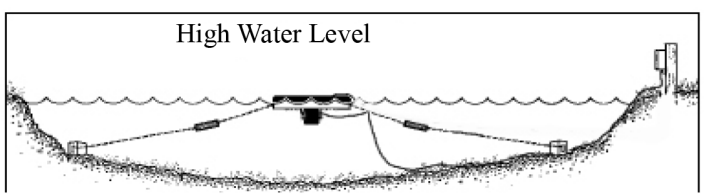
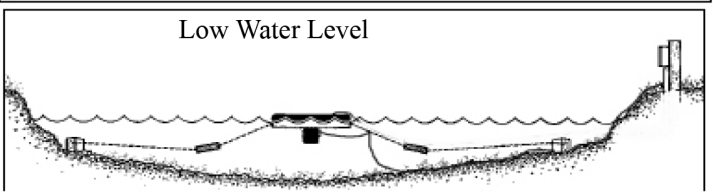
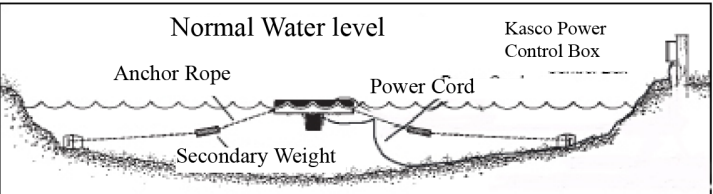
**STEP ONE**

Use the ropes to position the Unit in the desired location in the pond/lake (secure the cord near power source to prevent it from being dragged into the water). Anchor the ropes or secure them to the shoreline so the ropes are free of slack, but not tight. To prevent twisting of the unit due to torque, you should place the anchor at least 3m from the float for each meter of depth (Ex. A 3m deep pond would require an anchor 9m horizontally from the float.) For ease of removal, you may choose to keep at least one anchor within reach from shore, just below the water’s surface.



**STEP TWO (ALTERNATE INSTALLATION)**

In ponds where the water level fluctuates significantly, you may need to suspend a small weight (30cm of 2.54cm galvanize pipe works well) at the mid-point of the rope to take up any slack as the water level drops. The weight should be light enough so the Unit can rise as the water level rises. This can also help hide ropes by sinking them further below the surface.



**STEP THREE**

At this time the Fountain or Aerator is ready for operation. The unit can now be connected to the electrical

circuit (fixed wiring) with a plug or direct wire connection. The circuit must be provided with a disconnect switch, short circuit, and ground fault protection (RCD). Refer to unit specs for voltage and amperage ratings. Also, the motor name plate lists the unit's electrical ratings. Electrical installation must follow local and national electrical codes and should be installed by a professional.

## Maintenance Recommendations



Under No Circumstances should anyone enter the water while a fountain is operating. Turn Off and Disconnect electrical power prior to any Maintenance or Servicing

RCD (Residual Current Device) or GFCI are a safety feature that can also alert you to electrical leaks in the equipment. It is extremely important to test the RCD upon installation, each reinstallation, and monthly thereafter to ensure proper operation. If you have repeat, consistent trips on your ground fault, the equipment should be disconnected and removed from the water.

If the supply cord becomes damaged, it must be replaced by an authorized service center, or similarly qualified persons in order to avoid a hazard.

**OBSERVATION:** Operating equipment should be observed on a regular basis (daily, if possible) for any reduction or variation in performance. Disconnect electrical power and inspect if any reduction in performance is noticed.

**WINTER STORAGE:** In regions where there is significant freezing in the wintertime, Fountains should be removed from the water to protect them from the expansion pressure of the ice. Storage over winter is best in a location that is out of the sun and cool, but above 0°C.

**CLEANING:** Equipment should be removed from the water at least once per year (at the end of the season in cold climates) to clean the exterior of the system, especially the stainless steel motor housing (can). The motor housing is the surface that dissipates heat into

the water and any algae, calcium, etc. build-up will become an insulator that blocks heat transfer. In warmer regions it is recommended that the motor is removed and cleaned at least two to three times per year depending on conditions. In most cases a power washer will be sufficient if the unit and algae are still wet.

**SEAL AND OIL REPLACEMENT:** This is a sealed motor assembly and seals will wear out over time (similar to break pads on a car). Replacement of the seals and a change of oil after three years may add longevity to the operation of the motor, saving you the cost of more expensive repairs. In warmer climates where the equipment runs most or all of the year, it is a good idea to replace seals more regularly than you would need to in colder climates where the unit is removed from the water for several months.

**ZINC ANODE:** A Sacrificial Zinc Anode is supplied on the shaft of all 50Hz Fountains for protection of the equipment from corrosion and electrolysis. The zinc anode should be updated (replaced) if reduced to half the original size or if white in color. Corrosion from electrolysis is more commonly associated with saltwater or brackish water, but as a matter of precaution, it is important to periodically check the zinc anode in all installations (at least every two to three months).



Pollution of the liquid could occur due to leakage of lubricants. If leakage is detected, shutdown and have the unit removed for repair.

Water Garden Ltd  
Unit 7 Warrior Business Centre  
Fitzherbert Road  
Farlington  
Portsmouth - Hampshire  
PO6 1TX

Email: [contact@water-garden.co.uk](mailto:contact@water-garden.co.uk)  
Tel: 02392 373735

## Troubleshooting tips

The following is provided to help diagnose a probable source of trouble. It is a guideline only and may not show all causes for all problems.

Problem	Possible Cause	Likely Remedy
Unit does not start	<p>Power is off or disconnected</p> <p>RCD (residual current device), or GFCI (Ground fault circuit interrupter) is tripped.</p> <p>RCD continues to trip randomly.</p> <p>Tripped circuit breaker.</p> <p>Unit is jammed with debris and will not start.</p>	<p>Ensure unit is connected to the electrical circuit. Verify circuit breakers, timers, and/or interlock switches are turned on and functional.</p> <p>Reset the RCD or GFCI and restart the unit.</p> <p>If the unit continues to trip the RCD, this indicates a potential problem with the mains electrical service, power circuit feeding the unit, or the unit may have water in the power cord, or motor assembly. Contact your distributor for assistance to remedy this situation.</p> <p><b>Disconnect unit from electrical power.</b> Check and remove any debris from the unit. Refer to the installation manual for further details on removing any guarding. Reconnect to electrical power and start unit to see if problem is resolved. If not, call your local distributor for assistance.</p>
Reduced performance	<p>Unit is clogged with debris</p> <p>Damaged propeller or impeller</p> <p>Low voltage to unit</p>	<p><b>Disconnect unit from electrical power.</b> Check and remove any debris from the unit. Refer to the installation manual for further details on removing any components. Reconnect to electrical power and start unit to see if problem is resolved.</p> <p><b>Disconnect unit from electrical power.</b> Check the propeller/Impeller for any chipping or damage that would cause the unit to not operate properly. Refer to installation instructions for assembly. Replace propeller / impeller if damage is found. Contact your distributor for assistance.</p> <p>Check the voltage at the power cord connection to verify the unit is receiving sufficient voltage to operate. Refer to installation instructions for voltage requirements. Checking this voltage while the circuit is loaded will verify if the voltage is stable. Remedy the voltage problem prior to operating the unit again.</p>
Unit starts and stops automatically or sporatically	<p>Single phase unit - Internal overload is cycling</p>	<p>Unit is getting too hot and is cycling the internal thermal overload in the motor.</p> <p><b>Disconnect Unit from electrical power.</b></p> <p>Remove unit from water and inspect for excessive debris buildup on the unit that would prevent heat dissipation into the water. Check the motor shaft can rotate freely. A build up of algae, calcium or organic matter on the stainless steel motor housing will reduce motor cooling. Clean unit and reinstall to test. If the unit continues to cycle on/off sporadically, then turn off and contact your distributor for repair.</p>