



Creative Paradise Inc.



Make your own giant dragonfly

Make a stunning colourful large dragonfly for your garden using the Feather casing mould.

The following instructions enable you to make a feather pendant using the Extra Large Dragonfly Casting Mould (CPLF182).

You will need to following to create this project:

- Creative Paradise, Inc. mould CPLF182
- ZYP
- Powder sifter
- Mosaic nippers
- Powder vibe
- COE96 Cool lava on clear dichroic glass
- COE 96 Frits: F1 Powder, F2 Fine and F3 Medium

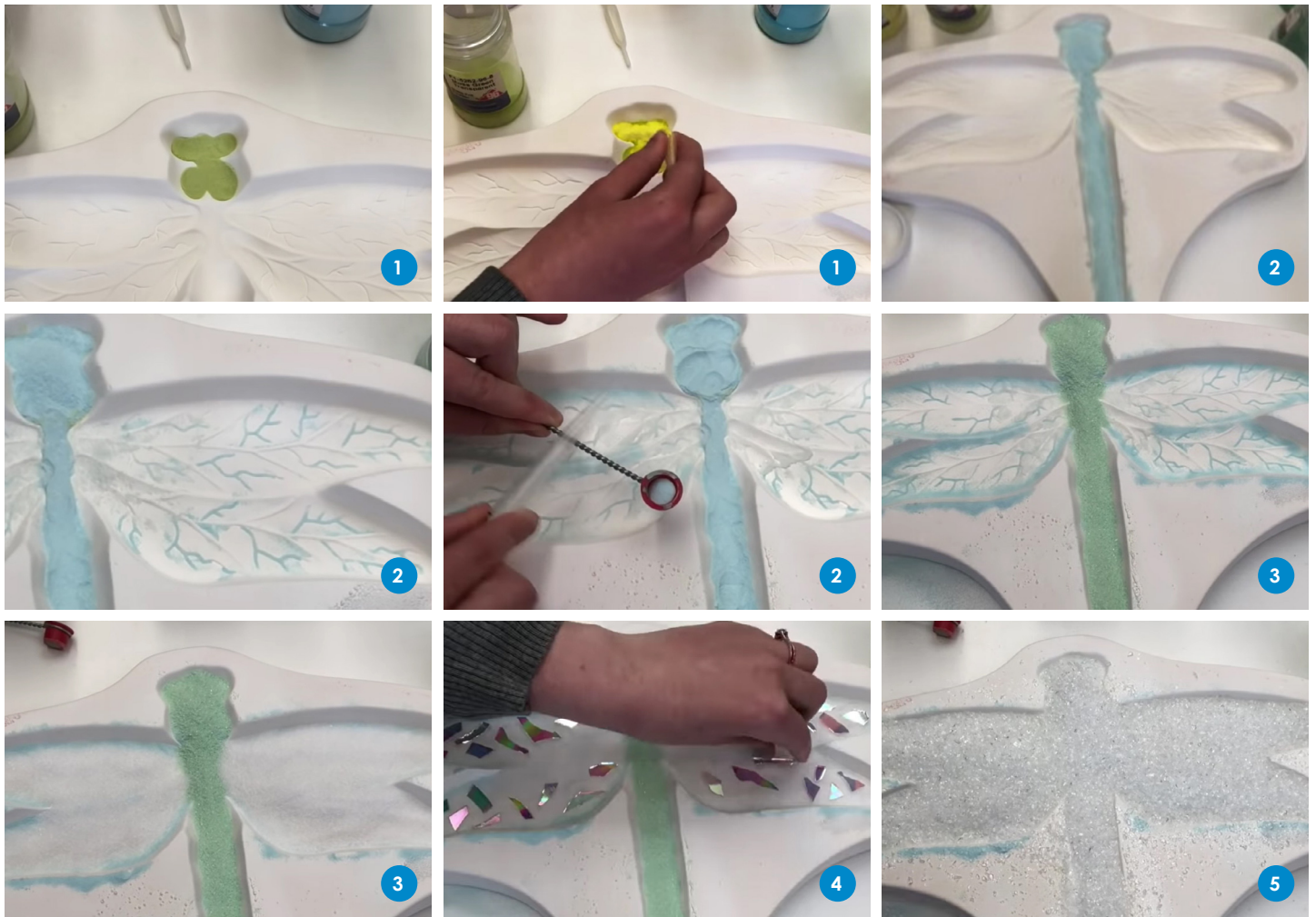


Ensure your mould is well primed before use

By using a primer this will prevent the glass sticking to the mould and potentially damaging the mould and the glass, make sure you use a small brush for detailed areas and dry thoroughly.

Creative Paradise highly recommend using ZYP a Boron Nitride spray due to the high temperatures required, this easy to apply spray can fire up to 982°C. Several light coats with a short waiting period of around 15 minutes between coats is preferable to one heavy coat. Shake the can well before use and hold the can upright while using to assure proper distribution of product. You will need to apply one light coat each time you fire.

The process



1 Fill the body

Place F1 Moss Green Powder into the head and tail of the Dragonfly. Back the Moss Green with F1 Yellow Opal.

Continue to fill the body, the veins and edges of the wings

Place F1 Turquoise from tail to head in the body of the Dragonfly. Press and sweep (lightly) some F1 Turquoise Blue in the veins. Use a powder sifter to sift F1 Turquoise Blue into the borders of the wings. Sprinkle some F1 Ming Green in the center of the wings (optional).

2 Continue to fill the body

Place F2 Pastel Green into the body of the Dragonfly, but do not fill the body up. Place a thin layer of F2 or F3 Clear into the wings but do not fill the wings.

3 Place dichroic into the wings

Using mosaic nippers, nip some Dichro glass pieces and place them in the wings.

Fill up the mould

Fill up the mould cavity with F2 or F3 Clear Frit until the mould weighs 550 grams.

XL Dragonfly mould firing schedule - full fuse

Segment	Rate Celsius/hr	Temp	Hold time (hr:min)
1.	152°C/hr	to 621°C	0:45
2.	27°C/hr	to 704°C	0:30
3.	194°C/hr	to 793°C**	0:10
4.	AFAP* OR 9999°C/hr	to 510°C	1:30

*AFAP = as fast as possible, some controllers will not allow a rate of 9999°C /hr

** Will vary depending on desired result and kiln

Note:

This data is a guide only, firing programs may need to be adjusted according to size and thickness of glass and the kiln's performance. Ensure that data is entered into the controller accurately, otherwise glass may not fuse correctly or paint will not fire onto the glass as desired. Creative Glass Guild sells all glass, tools and materials on the basis that customers have the knowledge and ability to use them safely and in accordance with all relevant regulations and legislation.