

# GLASS OPACITY KEY

---

**Pro Tip:** In addition to filtering by colour, use the opacity filter in search to find just the right glass for each project.

*\*Glass will differ on the reverse to the front. In terms of texture being on the back and colour mix, which is especially the case with opalescent and hand swirled glasses.\**



## Transparent

Light can easily pass through these 100% transparent glasses, since they don't contain any opalescent, opaque or any other light blocking material.

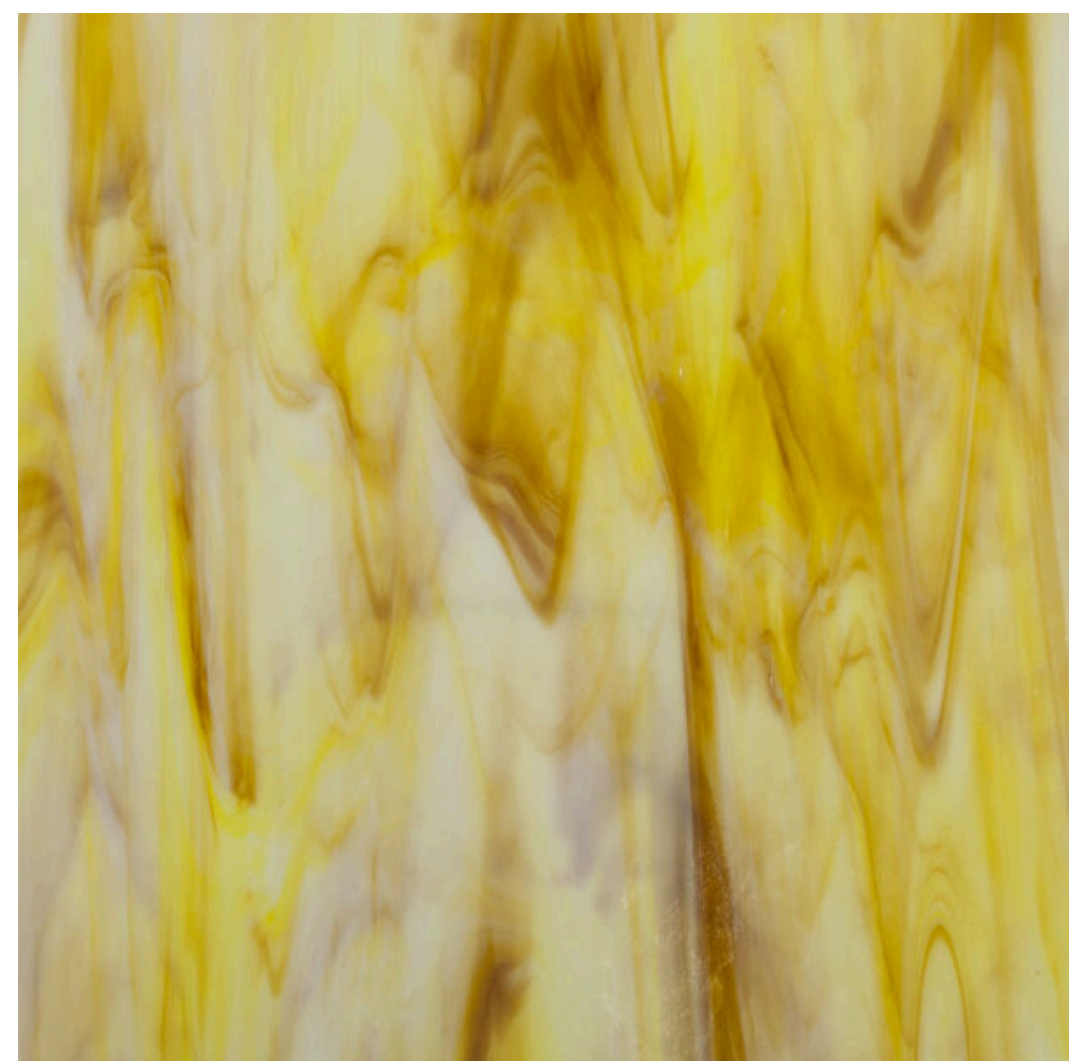
*(Image of OC533-1W)*



## Translucent

These mixed products are made of both Transparent and Opalescent glass but contain a higher amount of transparent glass, allowing light to pass through in many or most areas.

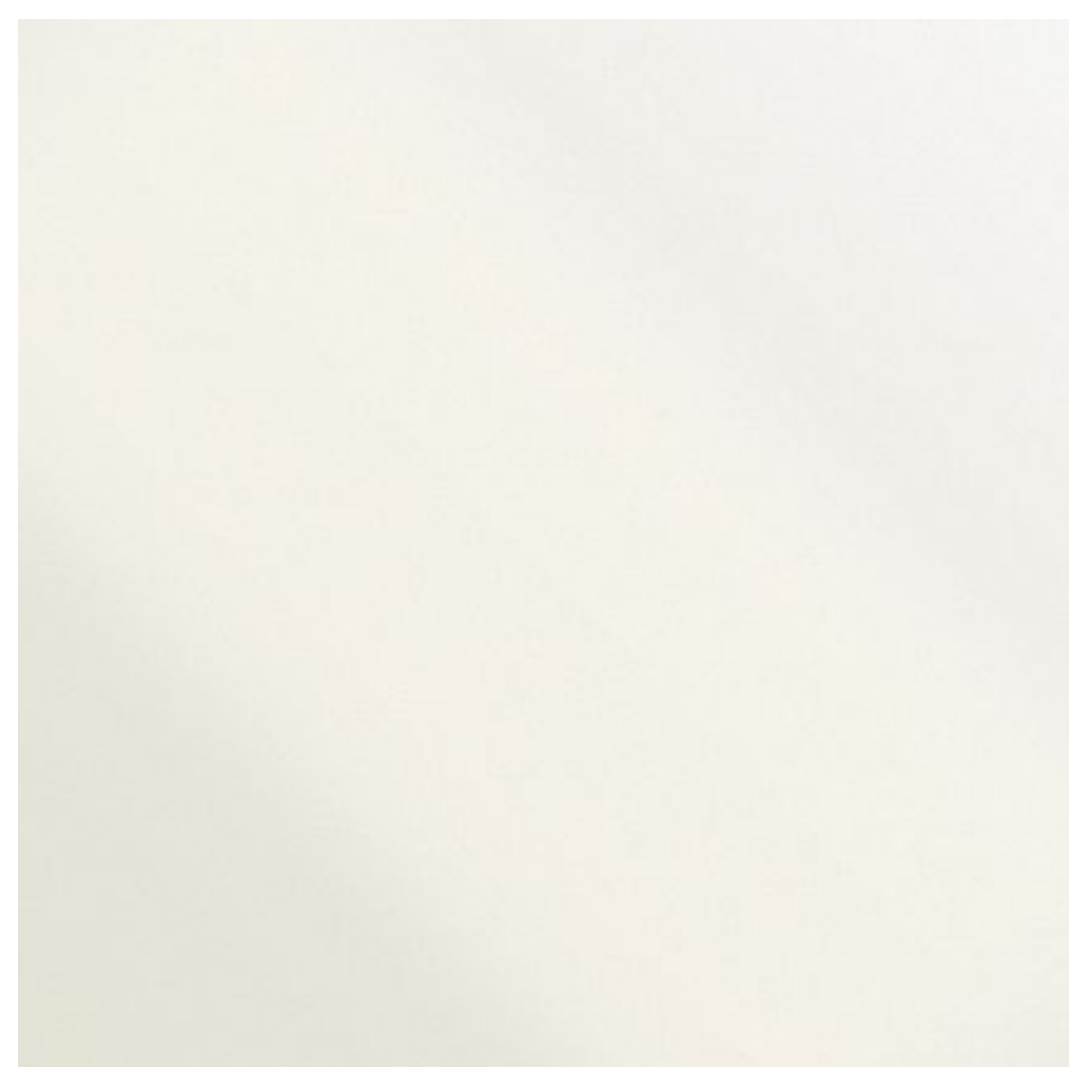
*(Image of OC379-1S)*



## Semi-Translucent

Semi-Translucent products are mixes that have predominantly Opalescent content, therefore allowing less light to pass through the sheet, or pass through in only small areas.

*(Image of OC6061-81CC)*



## Opalescent

Glasses that are primarily, or completely Opalescent, reflecting most light away, but often featuring a luminescent glow when backlit (varies by specific product).

*(Image of OC209)*



## Opaque

Opaque glass blocks light from passing through the sheet, making it completely non-transparent and ideal for projects where full coverage is required.

*(Image of OC226-74)*