



Creative Paradise Inc.



Make your own Feather pendant

Make a beautiful and delicate feather pendant using the Feather casting mould.

The following instructions enable you to make a feather pendant using the Feather Casting Mould (CPLF187).

You will need to following to create this project:

- Creative Paradise, Inc. mould CPLF187
- ZYP
- Mosaic nippers
- Powder vibe
- COE96 dichroic glass
- COE 96 Frits: F1 Powder and F2 Fine

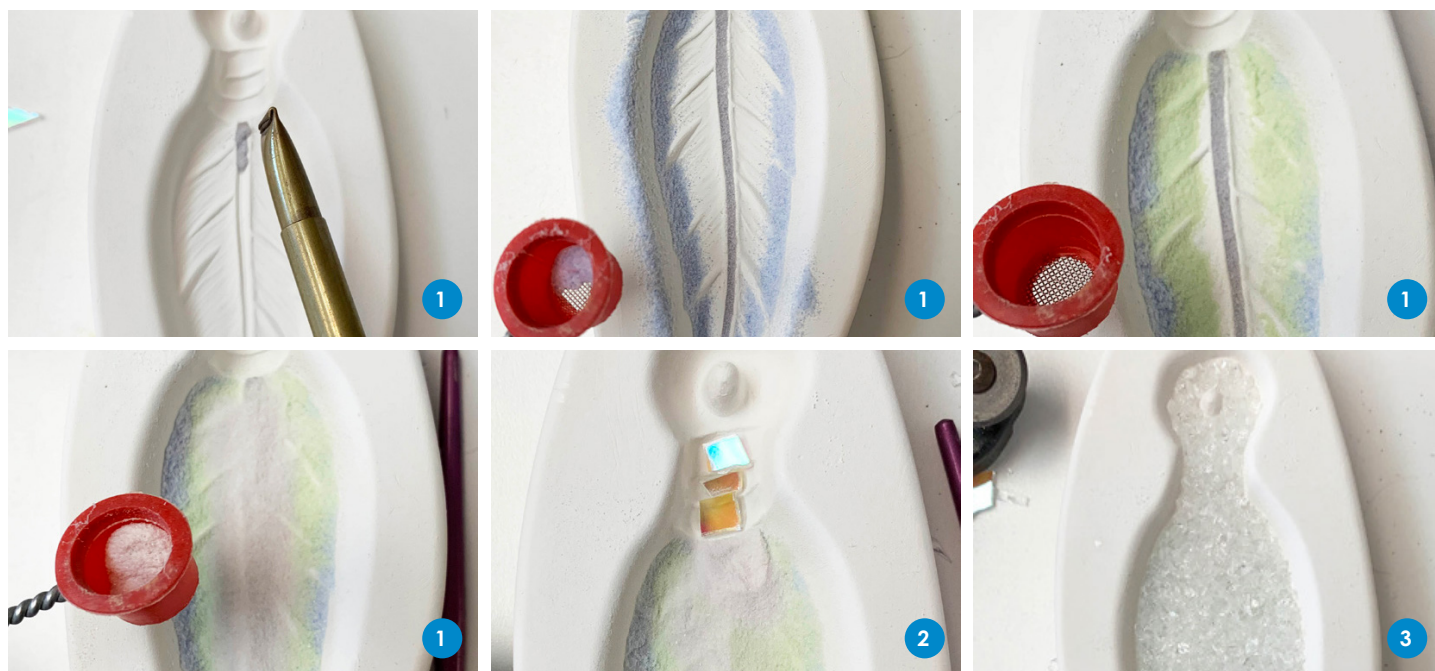


Ensure your mould is well primed before use

By using a primer this will prevent the glass sticking to the mould and potentially damaging the mould and the glass, make sure you use a small brush for detailed areas and dry thoroughly.

Creative Paradise highly recommend using ZYP a Boron Nitride spray due to the high temperatures required, this easy to apply spray can fire up to 982°C. Several light coats with a short waiting period of around 15 minutes between coats is preferable to one heavy coat. Shake the can well before use and hold the can upright while using to assure proper distribution of product. You will need to apply one light coat each time you fire.

The process



1 Create the feather colours with powdered frit

Use a powder vibrate to place F1 Grape into the middle part of the feather. Press and smooth it down with a finger tip.

Use a powder sifter to sift F1 Cobalt Blue around the outer edge of the feather.

Use a powder sifter to sift F1 Moss Green next to the F1 Cobalt Blue.

Use a powder sifter to sift F1 Light Purple next to the F1 Moss Green and over the middle.

2 Place some dichroic glass in the stem

Nip up small pieces of Dichro and place them Dichro side down in the stem of the mould as pictured.

3 Finish with fine clear frit

Fill the mould with F2 Clear until the mould weighs 25 grams. Sweep the frit away from the post.

Feather mould firing schedule - tack fuse

Segment	Rate Celsius/hr	Temp	Hold time (hr:min)
1.	152°C/hr	to 621°C	0:20
2.	194°C/hr	to 771°C	0:05
3.	AFAP* OR 9999°C/hr	to 515°C**	1:00

*AFAP = as fast as possible, some controllers will not allow a rate of 9999°C /hr

** Will vary depending on desired result and kiln

Note:

This data is a guide only, firing programs may need to be adjusted according to size and thickness of glass and the kiln's performance. Ensure that data is entered into the controller accurately, otherwise glass may not fuse correctly or paint will not fire onto the glass as desired. Creative Glass Guild sells all glass, tools and materials on the basis that customers have the knowledge and ability to use them safely and in accordance with all relevant regulations and legislation.