



*Creative Paradise Inc.*



# Fairy on the moon

Create a beautiful mythical fairy with CPI mould DT44 in a number of different ways!

The following instructions enable you to make your own fairy on the moon using mould (CPDT44) and the large round slump mould (CPGM125) if you wish to make it into a bowl.

**You will need to following to create this project:**

- Creative Paradise, Inc. mould CPDT44 and CPGM125
- ZYP
- Kiln paper
- COE96 glass
- COE96 frit



## Ensure your mould is well primed before use

By using a primer this will prevent the glass sticking to the mould and potentially damaging the mould and the glass, make sure you use a small brush for detailed areas and dry thoroughly.

Creative Paradise highly recommend using ZYP a Boron Nitride spray due to the high temperatures required, this easy to apply spray can fire up to 982°C. Several light coats with a short waiting period of around 15 minutes between coats is preferable to one heavy coat. Shake the can well before use and hold the can upright while using to assure proper distribution of product. You will need to apply one light coat each time you fire.

# The process - Clear Irid Fairy Bowl



## 1 Prime your mould

Treat your mould thoroughly with a suitable glass separator before every use. Gently sweep away any left over ZYP residue after every firing before applying a new coat.

## 2 Cut your glass

Cut a 11.25" dia circle out of COE96 Clear Irid sheet glass. Place glass on texture, Irid side up. Elevate the mould on kiln posts. Because this is one layer of glass it requires a schedule with less heat.

## 3

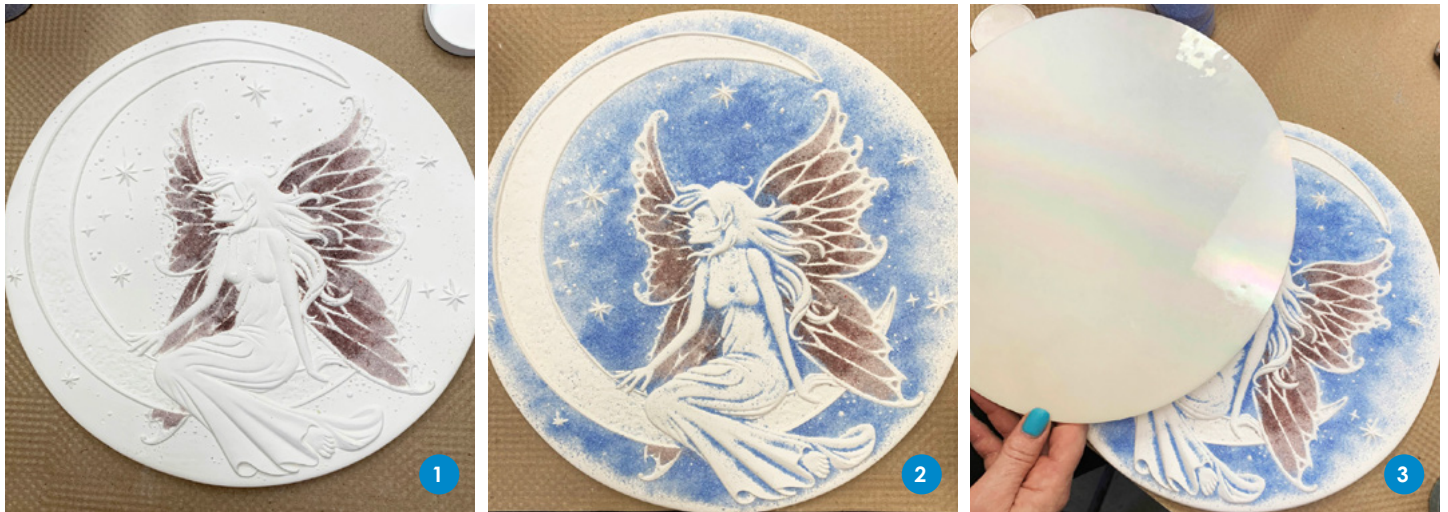
Segment	Rate Celsius/hr	Temp	Hold time (hr:min)
1.	153°C/hr	to 621°C	0:30
2.	28°C/hr	to 721°C	0:30
3.	194°C/hr	to 771°C	0:10
4.	AFAP* OR 9999°C/hr	to 510°C	1:00
5.	56°C/hr	to 426°C	0:10

## Slump your glass

You can slump your Fairy texture into a bowl. We used GM125 and slumped using the schedule:

Segment	Rate Celsius/hr	Temp	Hold time (hr:min)
1.	153°C/hr	to 676°C	0:20
2.	AFAP* OR 9999°C/hr	to 510°C	1:00
4.	56°C/hr	to 426°C	0:10

# The process - Fairy Suncatcher



## 1 Prime your mould and fill the wing with frit

Treat your mould thoroughly with a suitable glass separator. Put some F2 Fine Pale Purple, Light Purple and Deep Purple into the tips of the wings and body of wings.

## 2 Fill the sky, dress and hair with frit

Sprinkle F2 Fine Pale Blue and Light Blue into the sky and onto the Fairy to add some depth her dress and hair.

## 3 Cut 11.25" circles

Cut a 11.25" dia circle of White Irid sheet glass and a 11.25" dia of Clear sheet glass. Place the White Irid circle first onto the mould Irid Side down followed by the clear.

Optional: Place a piece of Bare 20 guagecopper wire inbetween the two sheets of glass so that you can hang the glass when it is fired.

## 4 Fire your piece

Place the mould on kiln shelf posts. Full fuse the glass on the mould using your favourite full fuse or our suggested Full Fuse schedule:

Segment	Rate Celsius/hr	Temp	Hold time (hr:min)
1.	153°C/hr	to 621°C	0:45
2.	28°C/hr	to 721°C	0:30
3.	194°C/hr	to 796°C	0:10
4.	AFAP* OR 9999°C/hr	to 510°C	1:00
5.	56°C/hr	to 426°C	0:10

## The process - Fairy Ring Border



### 1 Cut your circles

Cut a 11.25" dia circle out of Clear sheet glass, and 9/75" dia out of Clear sheet glass.

### 2 Cut your blue border

To make the border you will need to cut a 3/4" thick x 11.25" dia circle out of Transparent Cobalt Blue Irid sheet glass.

#### How to cut a circle border

Cut your circle in the required size. Leave the circle cutter suction cup in the center of the scored circle and move the cutting head of the circle cutter in to the size of your border. Score the glass. Flip the glass with the score side down onto a flat surface covered in craft foam or other material with a bit of give to it. Use your thumbs or the soft end of a handle of a running plier or grozer to put pressure on the back side of the score of the larger circle. The score will begin to run. Continue around the back side of the score until the score has been run the entire way around the circle. Make two scores radiating out from the larger circle score on the scored side of the glass. Use a running plier onto the two radiant scores to break the larger circle free from the exterior glass.

### 3 Place into kiln and fire

Place the mould in the kiln on shelf posts as pictured. Place the Clear Iridglass down irid side down on the mould first. Then fit the Clear, inside the Blue Irid border, the blue irid border should be irid side up on the mould. Place that ontop of the clear glass on the mould.

Full fuse the glass on the mould using your favourite full fuse or our suggested schedule:

Segment	Rate Celsius/hr	Temp	Hold time (hr:min)
1.	153°C/hr	to 621°C	0:45
2.	28°C/hr	to 721°C	0:30
3.	194°C/hr	to 796°C	0:10
4.	AFAP* OR 9999°C/hr	to 510°C	1:00
5.	56°C/hr	to 426°C	0:10

\*AFAP = as fast as possible, some controllers will not allow a rate of 9999°C /hr

\*\*Always make sure you know your kiln before using our suggested firing schedule. For example: if your kiln fires too hot you may need to take some heat off our suggested top temp. A great way to find out about your kilns temps is to do some test tiles.