

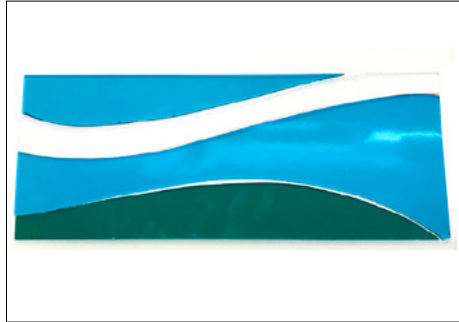
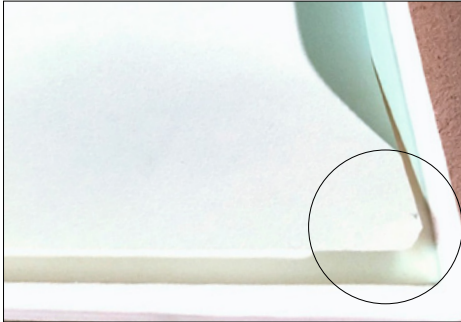
## Project Guide

### Dammed Waves

Glass Cutting: **Simple curves, straight lines**

Firing: **Full Fuse, Slump**

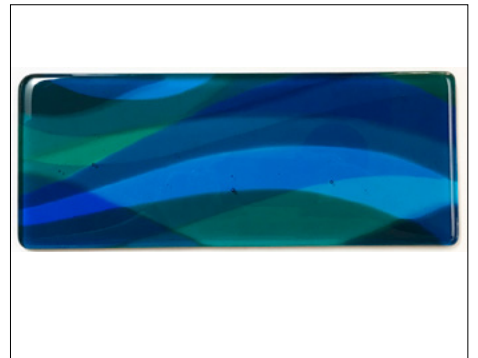
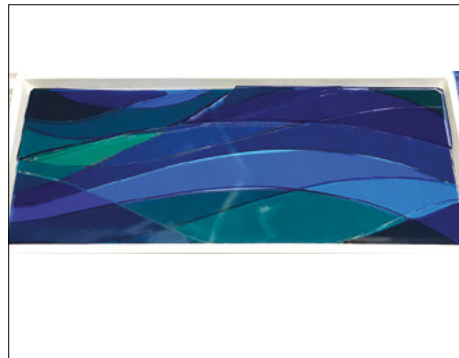
This project is three layers thick, so a dam is used to control the overall volume, preserving crisp lines and an even perimeter. There are many ways to create a dam, but we highly recommend the Patty Gray damming mold line produced by Creative Paradise, Inc. as the easiest.



1. Prepare your mold. (We used the 12.5" x 5" Patty Gray #GM178 by Creative Paradise, Inc. for this design.) Spray the inside interior carefully with a quality boron nitride spray, such as MO-RE® or ZYP®. Allow to dry 15 minutes, then cut a piece of POPYROS® Kiln Shelf Paper (smooth side up, with corners of paper just slightly rounded as shown above) and lay it into the bottom of the primed mold.

2. Using the pattern provided for Layer 1 on page 2, cut the glass for your first layer. To ensure pieces fit well, cut to the inside of all pattern lines for this project. Nip the glass slightly to round each of the four corners so as not to scrape off the boron nitride coating as you place the pieces into the prepared mold.

3. Using the pattern provided for Layer 2 on page 3, cut the glass for your second layer, as you did in Step 2. Stack layer 2 on top of layer 1 in the mold, again nipping the glass slightly (if necessary) to round each of the four corners.



4. Using the pattern provided for Layer 3 on page 4, cut the glass for your third and final layer. Stack layer 3 on top of layer 2 in the mold, again nipping the glass slightly (if necessary) to round each of the four corners.

5. When ready to fire your piece, place the dam mold atop four short kiln posts (one under the edge of each corner of the mold) to elevate the mold off of the kiln shelf. (If a kiln post is too far into the center of the mold, that area of the mold will be heated and cooled at a different rate and undesirable results will occur.) We used Patty Gray's workshop firing schedule (shown below), but you can also use the original schedules that are posted on the Creative Paradise website page for these Patty Gray mold products.

6. After firing, your piece will be ready to slump. We used Slumpy's #SM-9460, but there are many molds that can be used, including a 12" x 12" shallow slumping mold.

*NOTE: Failure to use kiln shelf paper in the bottom of the mold or properly elevating the mold during firing can result in eruptions and annealing problems, so avoid taking shortcuts.*

#### Full-Fuse Schedule We Used

Seg.	Ramp (°C per Hour)	Goal Temp (°C)	Hold Time (Minutes)
1	83	148	30
2	83	662	60
3	333	796	25-30
4	9999*	510	90
5	55	371	5

\* As fast as possible

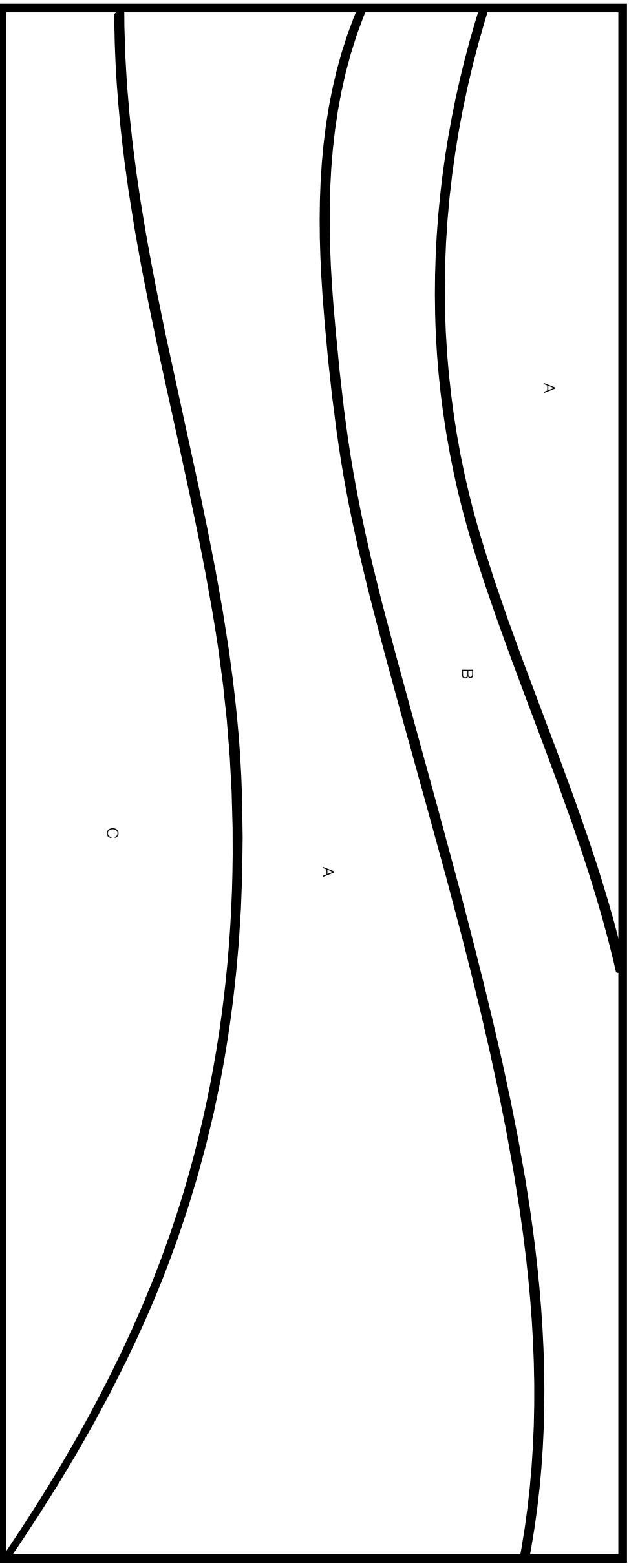


OceanSide  
GLASS & TILE®

## Dammed Waves: Layer 1 Pattern

### Glass Colors We Used

- A = 533-1S-F Sky Blue
- B = 100S-ICE-F Clear
- C = 523-2S-F Teal
- D = 533-3S-F Deep Aqua
- E = 130-8S-F Pale Blue



### Pattern Notes

When using transparent colors, it is not necessary to cut out pattern pieces. Simply place the glass on top of the pattern and trace the lines with a fine point Sharpie pen, or cut directly. Remember to cut to the inside of lines to ensure that all pieces fit together properly. (Grind if necessary.)

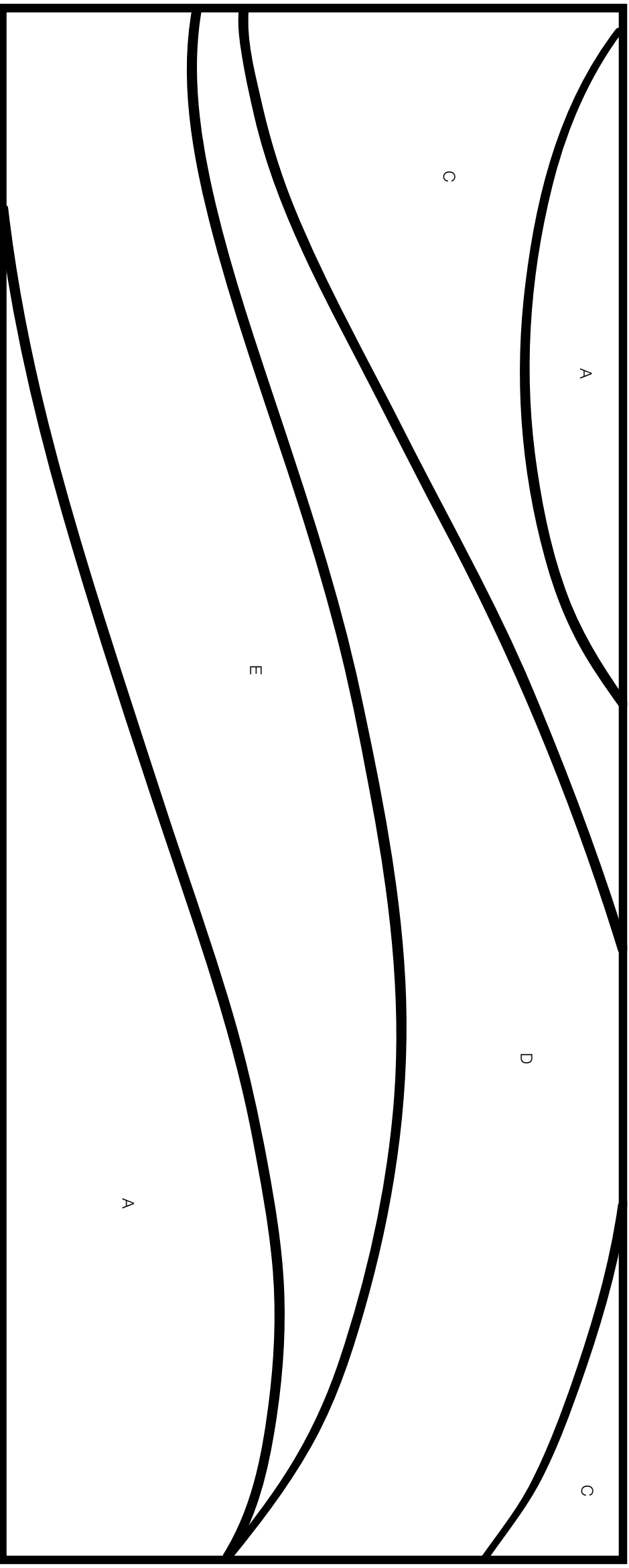


**oceanside**  
GLASS & TILE®

## Dammed Waves: Layer 2 Pattern

### Glass Colors We Used

- A = 533-1S-F Sky Blue
- B = 100S-ICE-F Clear
- C = 523-2S-F Teal
- D = 533-3S-F Deep Aqua
- E = 130-8S-F Pale Blue



### Pattern Notes

When using transparent colors, it is not necessary to cut out pattern pieces. Simply place the glass on top of the pattern and trace the lines with a fine point Sharpie pen, or cut directly. Remember to cut to the inside of lines to ensure that all pieces fit together properly. (Grind if necessary.)

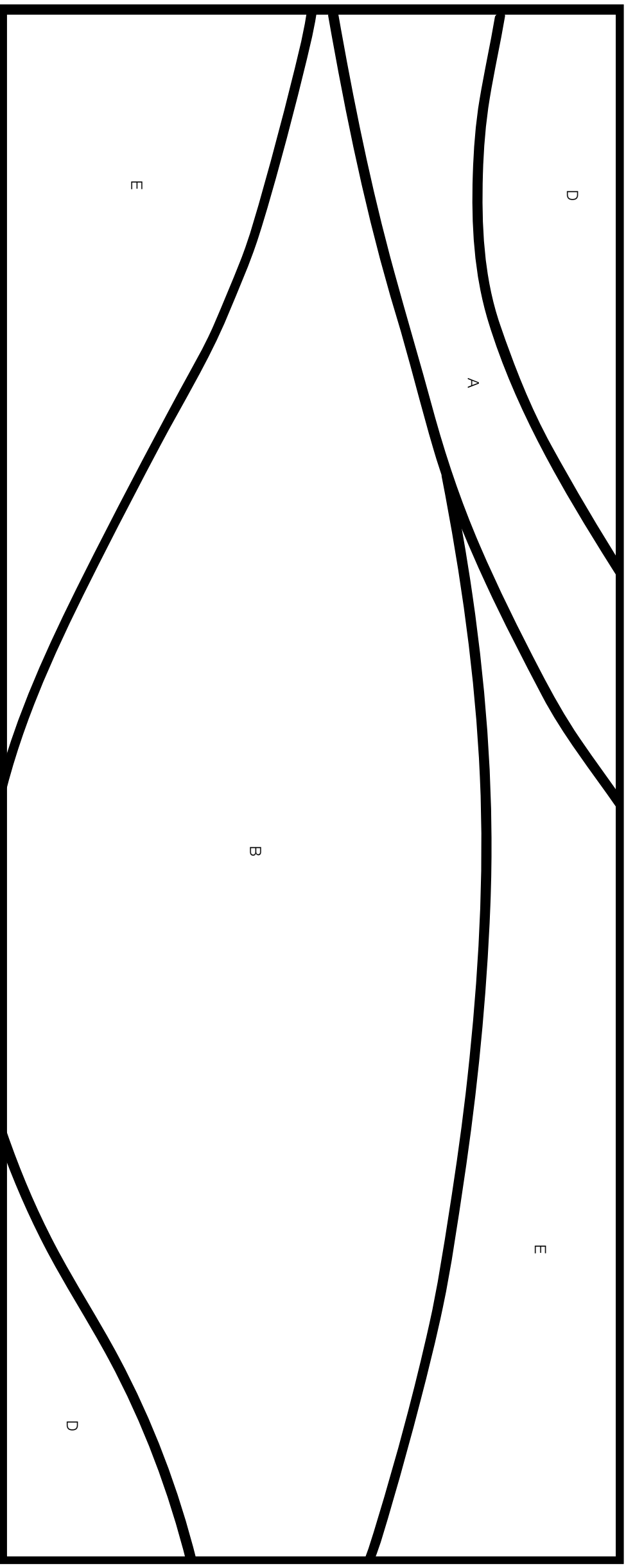


**oceanside**  
GLASS & TILE®

## Dammed Waves: Layer 3 Pattern

### Glass Colors We Used

- A = 533-1S-F Sky Blue
- B = 100S-ICE-F Clear
- C = 523-2S-F Teal
- D = 533-3S-F Deep Aqua
- E = 130-8S-F Pale Blue



### Pattern Notes

When using transparent colors, it is not necessary to cut out pattern pieces. Simply place the glass on top of the pattern and trace the lines with a fine point Sharpie pen, or cut directly. Remember to cut to the inside of lines to ensure that all pieces fit together properly. (Grind if necessary.)