



Creative Paradise Inc.



Aster Flowers

Make yourself beautiful aster flowers using Large Hump with Drop Mould.

The following instructions enable you to make Aster flowers.

You will need to following to create this project:

- Creative Paradise, Inc. mould CPGM53
- ZYP
- Kiln paper
- COE96 glass of your choice
- COE96 frit of your choice

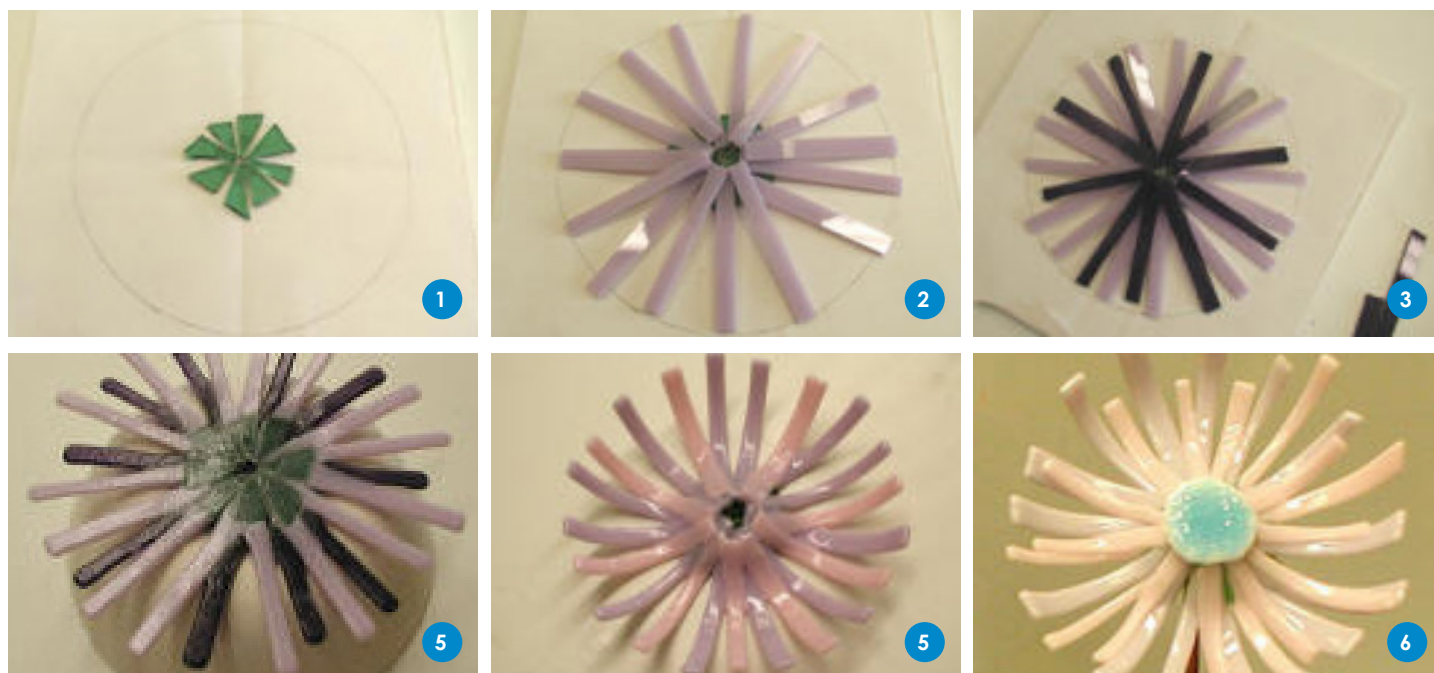


Ensure your mould is well primed before use

By using a primer this will prevent the glass sticking to the mould and potentially damaging the mould and the glass, make sure you use a small brush for detailed areas and dry thoroughly.

Creative Paradise highly recommend using ZYP a Boron Nitride spray due to the high temperatures required, this easy to apply spray can fire up to 982°C. Several light coats with a short waiting period of around 15 minutes between coats is preferable to one heavy coat. Shake the can well before use and hold the can upright while using to assure proper distribution of product. You will need to apply one light coat each time you fire.

The process



1 Draw your circle and create the centre of the flower

Begin by drawing a 6" circle with a pencil onto a piece of kiln shelf paper. Find the center of the circle by folding the paper twice. Place the paper onto a 8" unglazed ceramic tile or kiln shelf. Cut 8 small (1/2" t) green triangles and using fusing glue, glue them in a ring around the center dot of the paper. Make sure that there is a tiny gap in the center. This will form the sepal of the flower and give the center of the flower more sturdiness than petals alone.

2 Create the petals

Cut 15 to 18 pieces of glass that range in size from 1/4" - 3/8" thick and 3" - 2.75" long. Arrange these pieces of glass in a circle on top of the green triangles leaving a small circle gap in the center. The arrangement should be unsymmetrical and stacked.

3 Create the next layer of petals and fire

Cut 10 - 12 pieces of complimentary coloured glass that range in size from 1/4" - 3/8" thick and 2.75" - 2.5" long. Arrange these pieces of glass on top of the first layer of petals leaving a small circle gap in the center.

To create a center for the flower, cut a 1.25" circle of complimentary coloured glass. Place some contrasting frit onto the center of the circle and put the circle on the kiln paper next to but not touching the flower. Place the glass and tile into a kiln and fire at 194°C per hour to 782°C and anneal.

4 Prime your mould

We recommend ZYP but you can use Primo Primer on this mould (see instructions above).

5 Slump the flower onto CPGM53

Remove the fused flower from the kiln and place it on top of the CPGM53 with the center of the flower over the center of the mould and the with the green triangles facing up. Fire the project on the mould at 153°C per hour to 682°C and anneal for an hour.

After the kiln has cooled completely, remove the flower and carefully remove any glass separator from the glass with water and a soft cloth.

6 [Click here for separate instructions for stemming flowers.](#)